

# ATLAS

SINCE 1919

ATLAS T11-T51

ATLAS 35.2-75.2

ATLAS 88.3-240.2

ATLAS 250.2-870



**PRODUKTÜBERSICHT KRANE**  
**PRODUCT GUIDE CRANES**  
**PRÉSENTATION DU PRODUIT GRUES**  
**GAMA DE PRODUCTOS GRÚAS**

[WWW.ATLASGMBH.COM](http://WWW.ATLASGMBH.COM)



# VORWORT

Foreword · **Préface** · Prefacio

## **Leichter können Sie Schweres nicht heben**

Sie bekommen von Atlas für jeden Einsatz, für jeden LKW den passenden Kran.  
Die vorliegende Produktübersicht gibt Ihnen einen ersten Überblick über unser umfassendes Angebot: Es erfüllt mit Sicherheit Ihre höchsten Ansprüche.  
Die wichtigsten technischen Daten und Abbildungen erleichtern Ihnen die Vorauswahl.



## **Lösungen von Mensch zu Mensch**

Für Detail-Fragen oder ganz spezielle Anforderungen steht Ihnen Ihr qualifizierter Atlas Ladekran-Händler zur Seite. Sie können sich aber auch direkt an uns wenden. Gemeinsam finden wir für Sie die Lösung – denn passende Ideen entwickeln, gezielt umsetzen und im Einsatz zu betreuen gehört zu unseren Stärken.

**Ihr Atlas Ladekrane Team**

## **It will never be easier to lift a heavy load**

Atlas offers you the right crane for any use, for any truck.  
This Product Guide gives you an initial overview of our comprehensive product line. We are confident that our product line will meet your most demanding requirements. Key technical data and pictures facilitate your pre-selection.



## **Solutions from person to person**

Our qualified Atlas loading crane dealer would be glad to help you should you have any detailed questions or special requirements. You may also contact us directly. Together we will find the right solution for you – developing appropriate ideas, targeted implementation, and customer care during deployment are our strengths.

**Your Atlas Loading Crane Team**

## **Vous ne pouvez pas soulever plus facilement les choses lourdes**

Vous recevez de Atlas pour chaque application, chaque camion la grue qui convient.  
Cette présentation du produits vous donne un premier aperçu de notre offre étendue : elle remplit certainement vos exigences les plus élevées.  
Les caractéristiques techniques les plus importantes et les figures facilitent votre première sélection.



## **Des solutions d'homme à homme**

Votre concessionnaire de grue de chargement Atlas compétent est à vos côtés si vous avez des questions de détail ou des exigences spécifiques. Vous pouvez aussi nous contacter directement. Nous trouverons ensemble pour vous la solution – car élaborer des idées adaptées, les réaliser et les suivre font partie de nos forces.

**Votre équipe Atlas grues de chargement**

# VORWORT

Foreword · Preléde · Prefacio

## No es posible alzar cosas pesadas con mayor ligereza

Atlas le proporciona la grúa adecuada para cada aplicación y cada camión. Esta vista general de productos le ofrece una vista general introductoria sobre nuestra amplia oferta y satisfará con toda seguridad sus exigencias más elevadas. Los datos técnicos más importantes y las ilustraciones le facilitarán la elección previa.



## Soluciones de persona a persona

Para preguntas detalladas o requisitos muy especiales tiene a su lado a su distribuidor cualificado de grúas de carga Atlas. Pero también puede dirigirse directamente a nosotros. Juntos encontraremos la solución para usted - ya que desarrollar ideas adecuadas, ponerlas en práctica pertinentemente y asesorar su aplicación es uno de nuestros fuertes.

**Su equipo de grúas de carga Atlas**

# ATLAS



# INHALT

Content · Contenu · Contenido

## KLEIN • SMALL • PETIT • PEQUEÑO

T11	7
T15	8
T18	9
T23	10
T33	11
T38	12
T51	13
35	14
35.2	15
37	16
42	17
44	18
57.3	19
60	20
65.2 / 65 CS	21
66.3 E	22
75.2 / 75.2 CS	23

## MITTEL • MEDIUM • MOYENS • MEDIO

88.3 / 88 CS	25
88.3 SL	26
95.2 HDS / 95 CS HDS	27
96.3E	28
96.3 SL	29
104.3VE	30
105.2 / 105 CS	31
105.2 V / 105 VCS	32
105.2 T	33
115.2 / 115 CS	34
116.3	35
116.3 SL	36
116.3T	37
118.2 VGL	38
120.2 E	39
125.2 / 125 CS	40
125.2 V / 125.2 VCS	41
126.3 E / LM+	42
126.3 SL	43
129.3 V	44
135.2 LM+ / 135.2 E	45
135.2 VLM+ / 135.2 VE	46
145.2 / 145 CS	47
145.2 SL	48
145.2 V / 145 VCS	49
152.3 / 152 CS	50
165.2 LM+ / 165.2 E	51
165.2 LM+ SL / 165.2E SL	52
165.2 VLM+ / 165.2 VE	53
170.2 V / 170 VCS	54
172.3 LM+ / 172.3 E	55

# INHALT

Content • Contenu • Contenido

186.3	56
186.3 V	57
206.3 LM+ / 206.3 E	58
206.3 V LM+ / 206.3 VE	59
210.2 / 210 CS*	60
210.2 V / 210 VCS*	61
240.2 LM+ / 240.2 E	62
240.2 V LM+ / 240.2 VE	63

## GROSS • HEAVY • GRAND • GRAN

250.2 V / 250 VCS	65
250.2 T / 250 TCS	66
280.2V	67
300	68
300.2 V / 300 VCS	69
330.2 VLM+	70
332.3 E	71
345.2 V / 345 VCS	72
380.3 E	73
440.2 V / 440 VCS	74
510	75
600.2 T	76
600.2 T & JIB	77
620.3 E	78
760	79
870	80
870	81

## VB-KRANE • VB-CRANES • GRUES VB • GRÚAS VB

145.2 VB	83
165.2 VB	84
186.3 VB	85
210.2 VB	86

## ANDERE • OTHERS • ANTRES • OTROS

Informationen, Information, L'information, Información	87
Anbaugeräte, Attachments, Connexions, Conexiones	91
Kran/LKW-Kombination, Combination crane/truck, Combinasion de grue/ camion, Combinación de grúa/camión	93
Symbolerklärung, Symbols, Symboles, Símbolos	97

# ATLAS

# KLEIN

SMALL • PETIT • PEQUEÑO

## T11

Klassifikation H1/B3

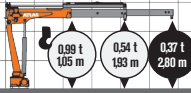


200 bar / 4–6 l/min

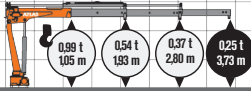


12 kNm / 330°

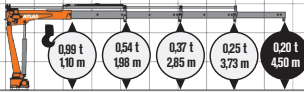
A26



A27



A28



optional

reduziert  
derated  
réduit  
reducido


	HYDR. 	E-HYDR. 			
A26	105 kg	125 kg	665 mm	1930 mm	325 mm
A27	125 kg	145 kg	665 mm	2800 mm	325 mm
A28	155 kg	175 kg	725 mm	3730 mm	325 mm

# KLEIN


SMALL • PETIT • PEQUEÑO

T15

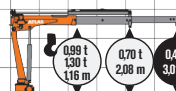
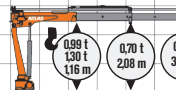
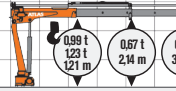
Klassifikation H1/B3



210 bar / 6-8 l/min








3,2 kNm / 330°

A26		<div style="border: 1px solid black; border-radius: 50%; padding: 5px; display: inline-block;">0,99 t 1,30 t 1,16 m</div>	<div style="border: 1px solid black; border-radius: 50%; padding: 5px; display: inline-block;">0,70 t 2,08 m</div>	<div style="border: 1px solid black; border-radius: 50%; padding: 5px; display: inline-block;">0,48 t 3,01 m</div>	
A27		<div style="border: 1px solid black; border-radius: 50%; padding: 5px; display: inline-block;">0,99 t 1,30 t 1,16 m</div>	<div style="border: 1px solid black; border-radius: 50%; padding: 5px; display: inline-block;">0,70 t 2,08 m</div>	<div style="border: 1px solid black; border-radius: 50%; padding: 5px; display: inline-block;">0,48 t 3,01 m</div>	<div style="border: 1px solid black; border-radius: 50%; padding: 5px; display: inline-block;">0,35 t 4,00 m</div>
A28		<div style="border: 1px solid black; border-radius: 50%; padding: 5px; display: inline-block;">0,99 t 1,23 t 1,21 m</div>	<div style="border: 1px solid black; border-radius: 50%; padding: 5px; display: inline-block;">0,67 t 2,14 m</div>	<div style="border: 1px solid black; border-radius: 50%; padding: 5px; display: inline-block;">0,47 t 3,06 m</div>	<div style="border: 1px solid black; border-radius: 50%; padding: 5px; display: inline-block;">0,35 t 4,00 m</div> <div style="border: 1px solid black; border-radius: 50%; padding: 5px; display: inline-block; margin-left: 10px;">0,25 t 5,00 m</div>

● optional

◐ reduziert  
derated  
réduit  
reducido

	HYDR. 	E-HYDR. 			
A26	165 kg	185 kg	690 mm	1320 mm	310 mm
A27	175 kg	195 kg	690 mm	1320 mm	310 mm
A28	185 kg	205 kg	790 mm	1340 mm	310 mm

# ATLAS

# T18

Klassifikation H1/B3

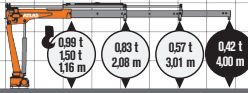


210 bar / 6–8 l/min

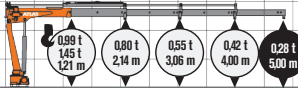


3,2 kNm / 330°

A27



A28



● optional

◐ reduziert  
derated  
réduit  
reducido

	HVDR. 	E-HVDR. 			
A27	180 kg	200 kg	690 mm	1320 mm	310 mm
A28	190 kg	210 kg	690 mm	1320 mm	310 mm

# KLEIN

SMALL • PETIT • PEQUEÑO

## T23

Klassifikation H1/B3

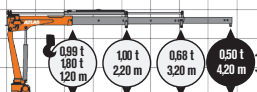


200 bar / 8-10 l/min

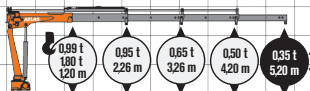


3,2 kNm / 360°

A27



A28



● optional

◐ reduziert  
derated  
réduit  
reducido

	HYDR.	E-HYDR.			
A27	225 kg	245 kg	790 mm	1420 mm	310 mm
A28	225 kg	275 kg	790 mm	1450 mm	310 mm

# ATLAS

# T33

Klassifikation H1/B3

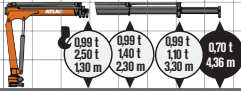


220 bar / 10–12 l/min

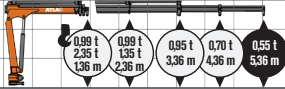


3,2 kNm / 360°

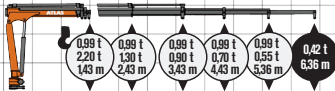
A27



A28



A29



● optional

◐ reduziert  
derated  
réduit  
reducido

	HYDR. 	E-HYDR. 			
A27	270 kg	290 kg	930 mm	1550 mm	370 mm
A28	295 kg	315 kg	930 mm	1550 mm	370 mm
A29	325 kg	345 kg	930 mm	1570 mm	370 mm

# KLEIN

## SMALL • PETIT • PEQUEÑO

### T38

Klassifikation H1/B3



220 bar / 12–15 l/min

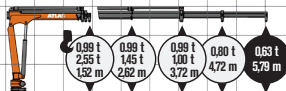


4,8 kNm / 360°

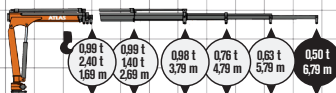
A27



A28



A29



● optional

◐ reduziert  
derated  
réduit  
reducido

	HYDR.	E-HYDR.			
A27	310 kg	330 kg	870 mm	1630 mm	370 mm
A28	345 kg	365 kg	870 mm	1630 mm	370 mm
A29	375 kg	365 kg	940 mm	1650 mm	370 mm

# ATLAS



# T51

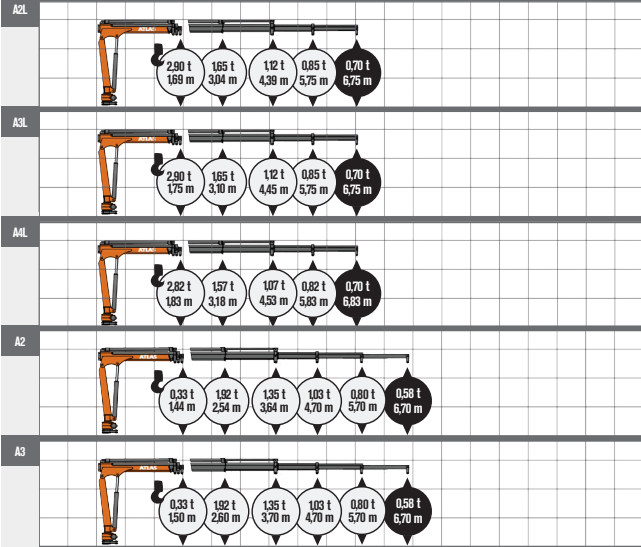
Klassifikation H1/B3



230 bar / 15–18 l/min



8,0 kNm / 330°



- optional
- reduziert  
derated  
réduit  
reducido

	HYDR.	"L"			
A2	465 kg	485 kg	1380 mm	1830 mm	545 mm
A3	500 kg	530 kg	1380 mm	1830 mm	545 mm
A4		565 kg	1510 mm	1790 mm	545 mm

# KLEIN

SMALL • PETIT • PEQUEÑO

35

Klassifikation H1/B3

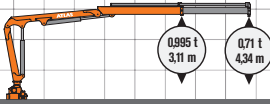


235/240 bar / 10 l/min

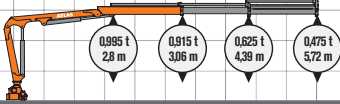


5 kNm / 400°

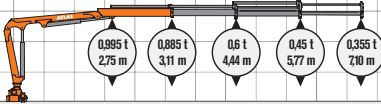
35.1



35.2



35.3



35.1	455 kg	1697 mm	1576 mm	473 mm
35.2	490 kg	1697 mm	1576 mm	473 mm
35.3	515 kg	1724 mm	1576 mm	473 mm

# 35.2

Klassifikation H1/B3

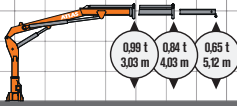


250 bar / 15 l/min

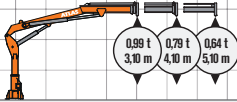






4,3 kNm / 390°

A1



A2



				
A1	545 kg	2245 mm	1785 mm	555 mm
A2	580 kg	2245 mm	1785 mm	555 mm

# KLEIN

SMALL • PETIT • PEQUEÑO

## 37

Klassifikation H1/B3

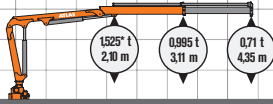


235/240 bar / 10 l/min

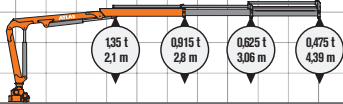


5 kNm / 400°

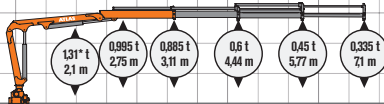
37.1



37.2



37.3



\* Lifting capacity to the fixed hook attachment

37.1	455 kg	1697 mm	1576 mm	473 mm
37.2	490 kg	1697 mm	1576 mm	473 mm
37.3	515 kg	1724 mm	1576 mm	473 mm

# 42

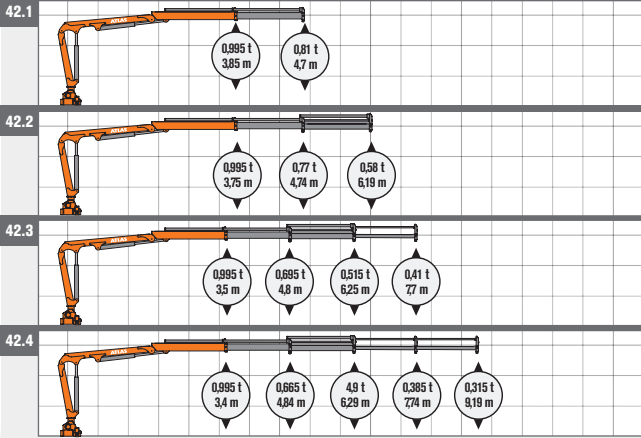
Klassifikation H1/B3



290 bar / 10 l/min



5,5 kNm / 400°



42.1	512 kg	1784 mm	1633 mm	516 mm
42.2	550 kg	1784 mm	1633 mm	516 mm
42.3	585 kg	1784 mm	1633 mm	516 mm
42.4	620 kg	1804 mm	1633 mm	516 mm

# KLEIN

SMALL • PETIT • PEQUEÑO

44

Klassifikation H1/B3

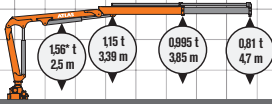


290 bar / 10 l/min

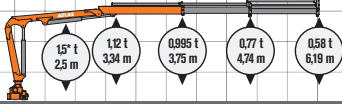


5,5 kNm / 400°

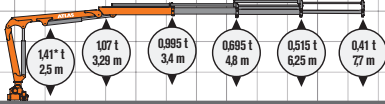
44.1



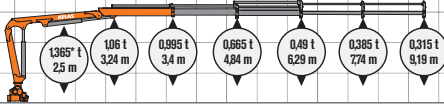
44.2



44.3



44.4



\* Lifting capacity to the fixed hook attachment

44.1	512 kg	1784 mm	1633 mm	516 mm
44.2	550 kg	1784 mm	1633 mm	516 mm
44.3	585 kg	1784 mm	1633 mm	516 mm
44.4	620 kg	1804 mm	1633 mm	516 mm

# ATLAS

# 57.3

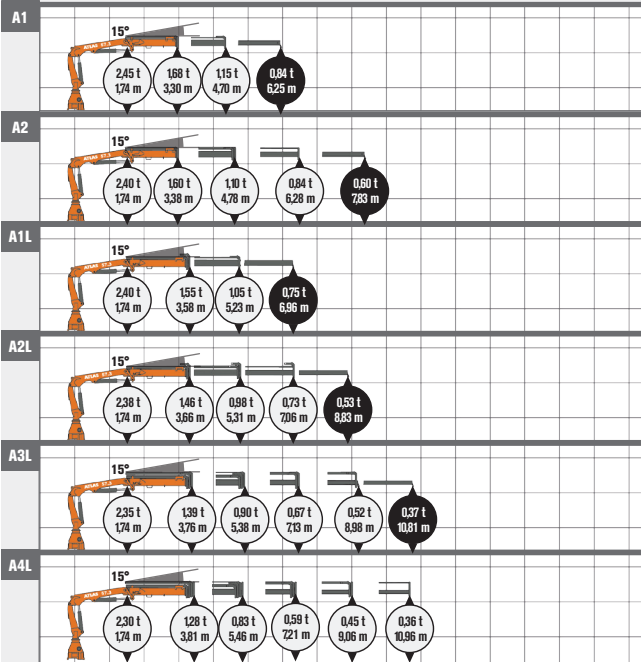
Klassifikation HC1/HD4



300 bar / 25 l/min



7,4 kNm / 400°



● optional

A1	740 kg	2155 mm	1930 mm	628 mm
A2	800 kg	2155 mm	1930 mm	628 mm
A1L	750 kg	2155 mm	1930 mm	628 mm
A2L	840 kg	2155 mm	1930 mm	628 mm
A3L	910 kg	2155 mm	1930 mm	628 mm
A4L	960 kg	2155 mm	1930 mm	628 mm

# KLEIN

SMALL • PETIT • PEQUEÑO

60

Klassifikation H1/B3

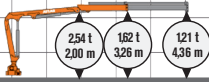


270 bar / 20 l/min

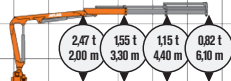


6,0 kNm / 400°

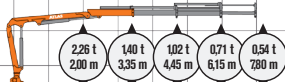
A1



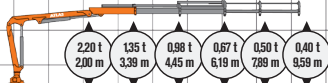
A2







A3



A4



				
A1	720 kg	1990 mm	1908 mm	614 mm
A2	790 kg	2024 mm	1991 mm	622 mm
A3	845 kg	2024 mm	1991 mm	622 mm
A4	890 kg	2024 mm	1991 mm	622 mm

# ATLAS

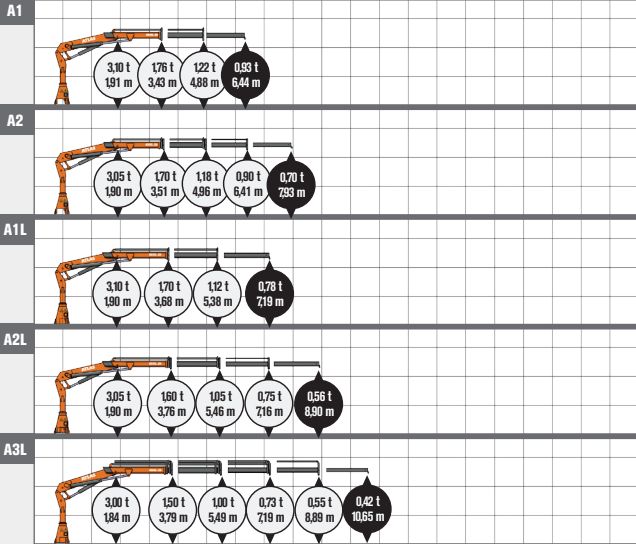


# 65.2 / 65 CS





Klassifikation H1/B3

 270 bar / 30 l/min

 8,4 kNm / 390°



 optional

				
A1	800 kg	2245 mm	1885 mm	600 mm
A2	860 kg	2245 mm	1885 mm	600 mm
A1L	830 kg	2245 mm	1885 mm	600 mm
A2L	920 kg	2245 mm	1885 mm	600 mm
A3L	990 kg	2245 mm	1885 mm	640 mm

# KLEIN

SMALL • PETIT • PEQUEÑO

## 66.3 E

Klassifikation HC1/HD4

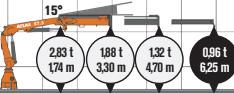


330 bar / 25 l/min

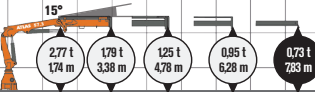


7,4 kNm / 400°

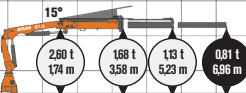
A1



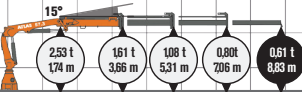
A2



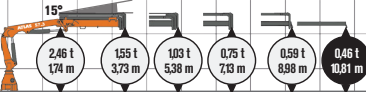
A1L



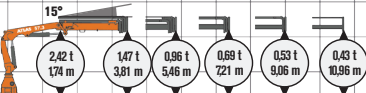
A2L



A3L



A4L



● optional

A1	755 kg	2155 mm	1930 mm	628 mm
A2	815 kg	2155 mm	1930 mm	628 mm
A1L	765 kg	2155 mm	1930 mm	628 mm
A2L	855 kg	2155 mm	1930 mm	628 mm
A3L	925 kg	2155 mm	1930 mm	628 mm
A4L	975 kg	2155 mm	1930 mm	628 mm

# ATLAS

# 75.2 / 75.2 CS

Klassifikation H1/B3

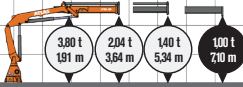


270 bar / 35 l/min

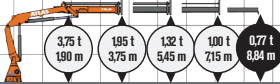


8,4 kNm / 410°

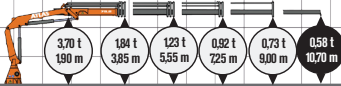
A1



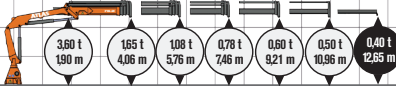
A2



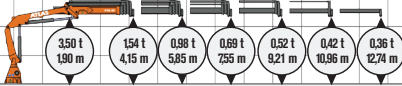
A3



A4L



A5L

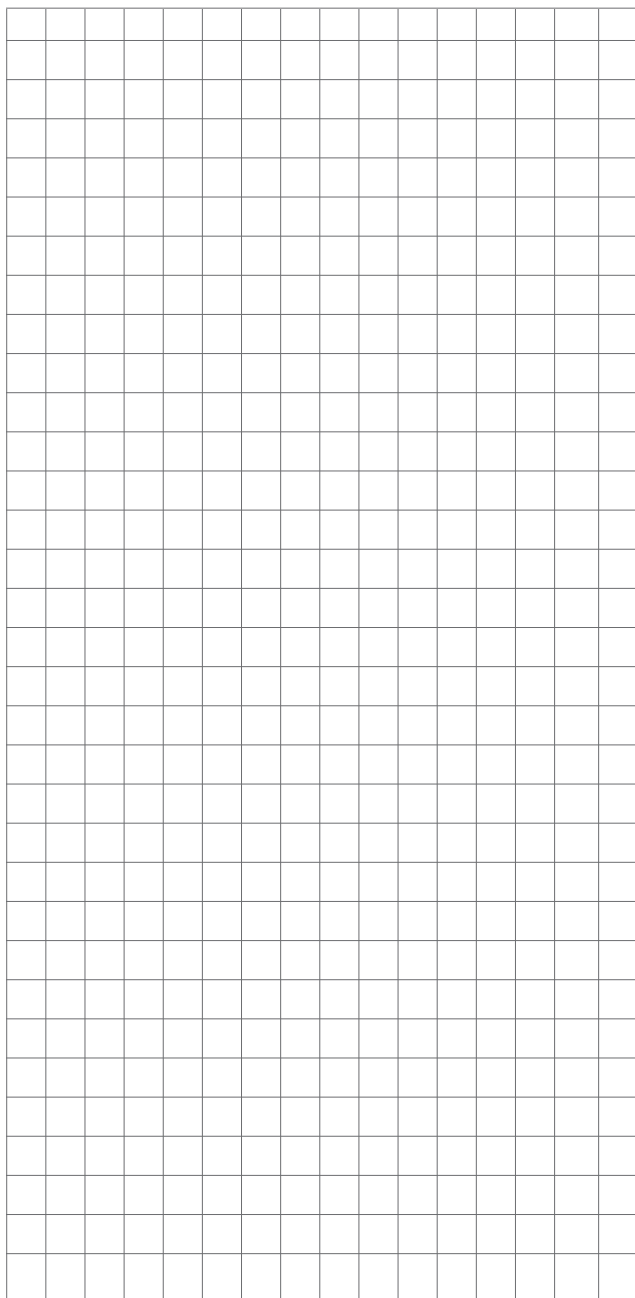


optional

A1	915 kg	2400 mm	2040 mm	675 mm
A2	975 kg	2400 mm	2040 mm	675 mm
A3	1040 kg	2400 mm	2040 mm	675 mm
A4L	1225 kg	2400 mm	2040 mm	655 mm
A5L	1295 kg	2400 mm	2040 mm	760 mm

# NOTIZEN

Notes • Note • Apunte



**ATLAS**

# MITTEL

MEDIUM • MOYENNE • MEDIO

## 88.3 / 88 CS

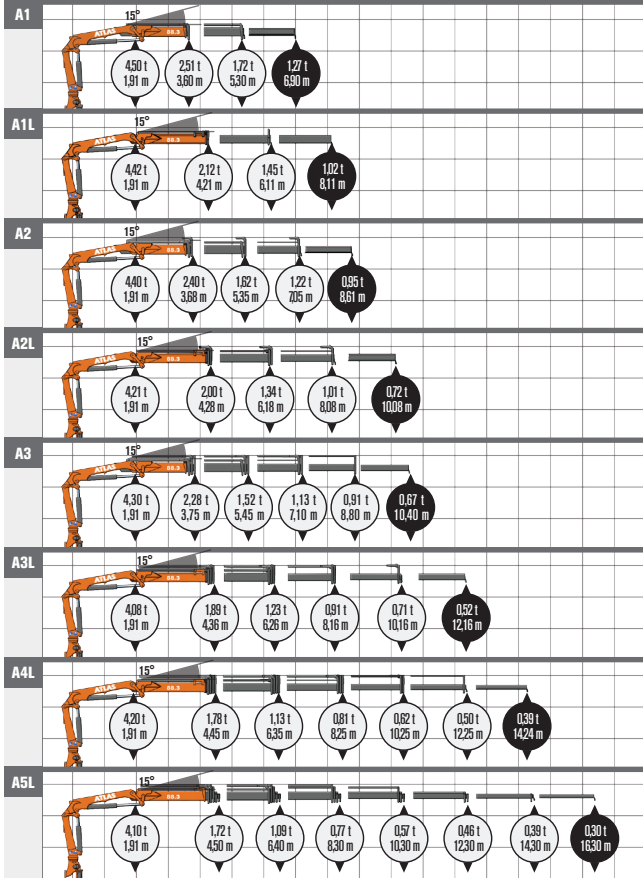
Klassifikation HC1/HD4



280 bar / 35 l/min



18,1 kNm / 410°



A1	1260 kg	2400 mm	2360 mm	895 mm
A2	1350 kg	2400 mm	2360 mm	895 mm
A3	1470 kg	2400 mm	2360 mm	895 mm
A1L	1320 kg	2400 mm	2360 mm	895 mm
A2L	1430 kg	2400 mm	2360 mm	895 mm
A3L	1560 kg	2400 mm	2360 mm	895 mm
A4L	1660 kg	2400 mm	2360 mm	895 mm
A5L	1745 kg	2400 mm	2360 mm	960 mm

optional

# MITTEL

MEDIUM • MOYENNE • MEDIO

## 88.3 SL

Klassifikation HC1/HD4

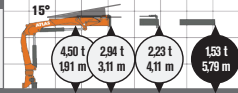


280 bar / 35 l/min

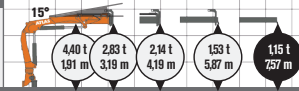


18,1 kNm / 410°

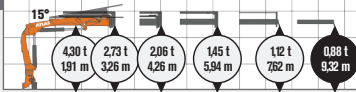
A1SL







A2SL



A3SL



● optional

				
A1SL	1215 kg	2400 mm	2360 mm	900 mm
A2SL	1310 kg	2400 mm	2360 mm	900 mm
A3SL	1390 kg	2400 mm	2360 mm	900 mm

# ATLAS

# 95.2 HDS / 95CS HDS

Klassifikation H1/B4



230 bar / 50 l/min

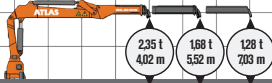


18,1 kNm / 410°

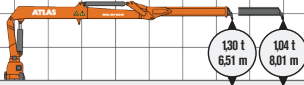
A11







A12



A15



				
A11	1455 kg	2420 mm	2360 mm	661 mm
A12	1550 kg	2420 mm	2360 mm	661 mm
A15	1665 kg	2420 mm	2360 mm	661 mm

# MITTEL

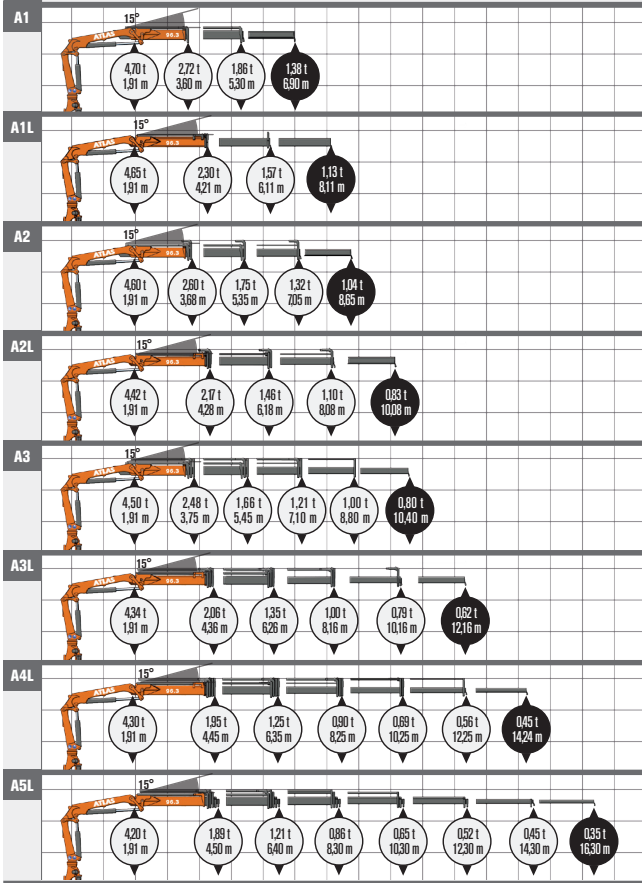
MEDIUM • MOYENNE • MEDIO





## 96.3 E

Klassifikation HC1/HD4

 300 bar / 35 l/min

 18,1 kNm / 410°



				
A1	1275 kg	2400 mm	2360 mm	900 mm
A2	1365 kg	2400 mm	2360 mm	900 mm
A3	1485 kg	2400 mm	2360 mm	900 mm
A1L	1335 kg	2400 mm	2360 mm	900 mm
A2L	1445 kg	2400 mm	2360 mm	900 mm
A3L	1575 kg	2400 mm	2360 mm	900 mm
A4L	1675 kg	2400 mm	2360 mm	900 mm
A5L	1760 kg	2400 mm	2360 mm	1005 mm

 optional

# ATLAS



# 96.3 SL

Klassifikation HC1/HD4

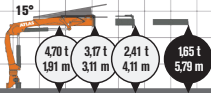


300 bar / 35 l/min

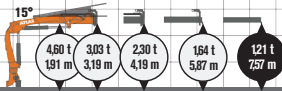


18,1 kNm / 410°

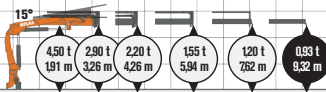
A1SL







A2SL



A3SL



 optional

				
A1SL	1230 kg	2400 mm	2360 mm	900 mm
A2SL	1325 kg	2400 mm	2360 mm	900 mm
A3SL	1405 kg	2400 mm	2360 mm	900 mm

# MITTEL

MEDIUM • MOYENNE • MEDIO

## 104.3VE

Klassifikation HC1/HD4

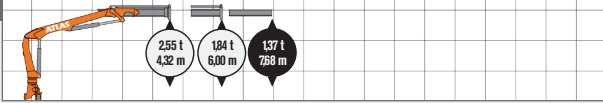


290/310 bar / 35 l/min



18,1 kNm / 410°

A11



● optional

A11



1250 kg



2419 mm



2300 mm



731 mm

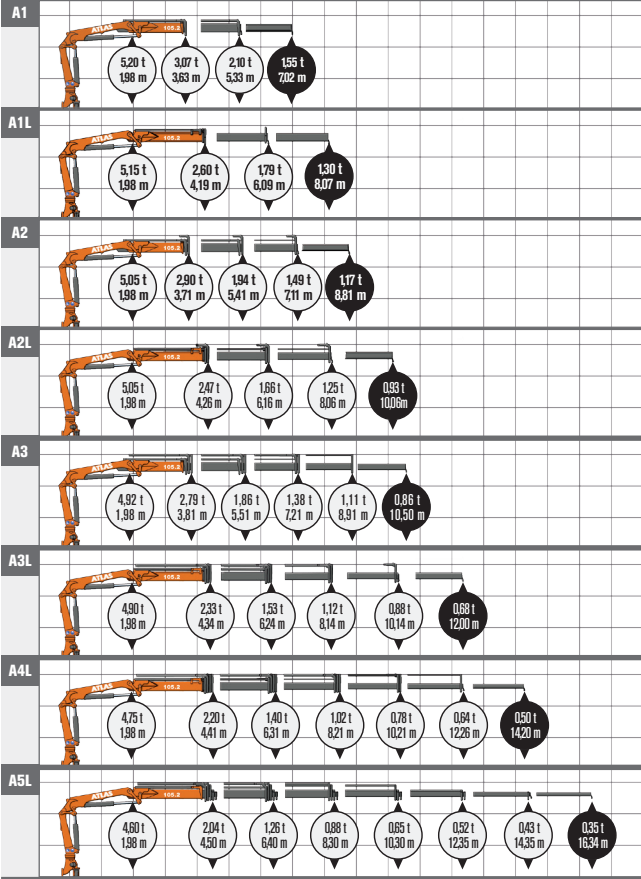
# ATLAS





# 105.2 / 105 CS

Klassifikation H1/B3

 270 bar / 45 l/min

 16,9 kNm / 410°



				
A1	1420 kg	2435 mm	2190 mm	865 mm
A2	1525 kg	2435 mm	2190 mm	865 mm
A3	1620 kg	2435 mm	2190 mm	865 mm
A1L	1440 kg	2435 mm	2190 mm	865 mm
A2L	1575 kg	2435 mm	2190 mm	865 mm
A3L	1700 kg	2435 mm	2190 mm	865 mm
A4L	1845 kg	2435 mm	2190 mm	865 mm
A5L	2000 kg	2435 mm	2190 mm	985 mm

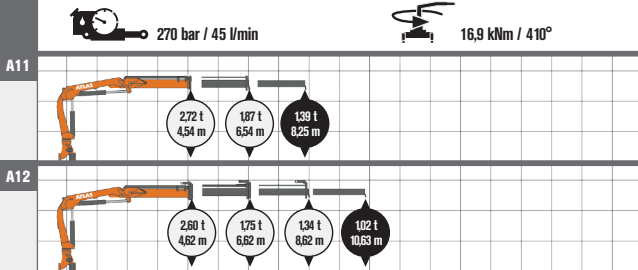
 optional

# MITTEL

MEDIUM • MOYENNE • MEDIO

## 105.2 V / 105 VCS

Klassifikation H1/B3



● optional

A11	1395 kg	2435 mm	2190 mm	655 mm
A12	1560 kg	2435 mm	2190 mm	655 mm

# 105.2 T

Klassifikation H1/B3

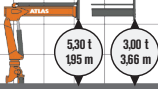


300 bar / 45 l/min

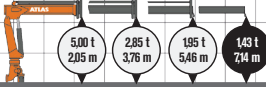


16,9 kNm / 410°

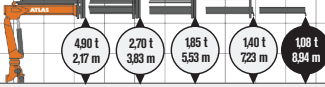
A26



A27



A28



optional

A26	1040 kg	2435 mm	2245 mm	643 mm
A27	1150 kg	2435 mm	2245 mm	643 mm
A28	1240 kg	2435 mm	2245 mm	643 mm

# MITTEL

MEDIUM • MOYENNE • MEDIO

## 115.2 / 115 CS

Klassifikation H1/B3



270 bar / 50 l/min

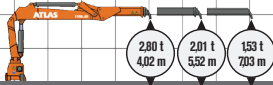


21,1 kNm / 410°

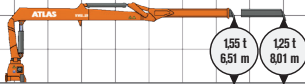
A11







A12



A15



				
A11	1580 kg	2420 mm	1840 mm	790 mm
A12	1675 kg	2420 mm	1840 mm	790 mm
A15	1690 kg	2420 mm	1840 mm	790 mm

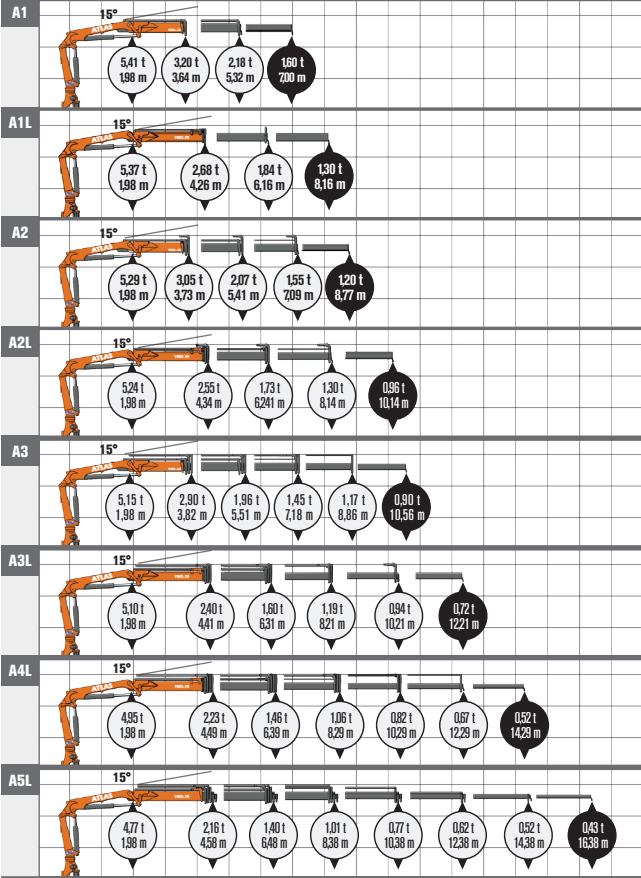
# ATLAS





# 116.3

Klassifikation HC1/HD4

 290 bar / 45 l/min

 18,1 kNm / 410°



				
A1	1315 kg	2384 mm	2282 mm	890 mm
A2	1430 kg	2384 mm	2282 mm	890 mm
A3	1520 kg	2384 mm	2282 mm	890 mm
A1L	1460 kg	2384 mm	2282 mm	890 mm
A2L	1580 kg	2384 mm	2282 mm	890 mm
A3L	1700 kg	2384 mm	2282 mm	890 mm
A4L	1800 kg	2384 mm	2282 mm	890 mm
A5L	1885 kg	2384 mm	2282 mm	990 mm

 optional

# MITTEL

MEDIUM • MOYENNE • MEDIO

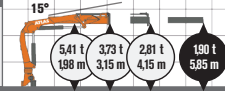
## 116.3 SL

Klassifikation HC1/HD4

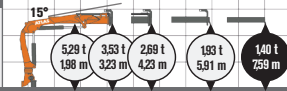
 290 bar / 45 l/min

 18,1 kNm / 410°

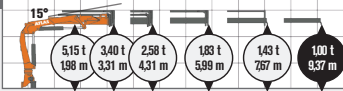
A1SL







A2SL



A3SL



 optional

				
A1SL	1265 kg	2440 mm	2300 mm	875 mm
A2SL	1360 kg	2440 mm	2300 mm	875 mm
A3SL	1450 kg	2440 mm	2300 mm	875 mm



# 116.3 T

Klassifikation HC1/HD4

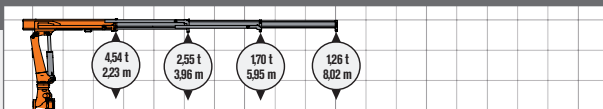


290 bar / 45 l/min



18,1 kNm / 410°

A28



A28

1350 kg



2400 mm



2620 mm



1105 mm

# MITTEL

MEDIUM • MOYENNE • MEDIO

## 118.2 VGL

Klassifikation H1/B4



250 bar / 100 l/min



21,7 kNm / 410°

A12				
A12L				
A14				
A14K				
A15				
A15K				
A17				
A18				

A12	1710 kg	2536 mm	2660 mm	790 mm
A12L	1760 kg	2536 mm	2660 mm	790 mm
A14	1691 kg	2536 mm	2660 mm	790 mm
A14K	1682 kg	2536 mm	2660 mm	790 mm
A15	1761 kg	2536 mm	2660 mm	790 mm
A15K	1752 kg	2536 mm	2660 mm	790 mm
A17	1736 kg	2536 mm	2660 mm	790 mm
A18	1806 kg	2536 mm	2660 mm	790 mm

# ATLAS

# 120.2 E

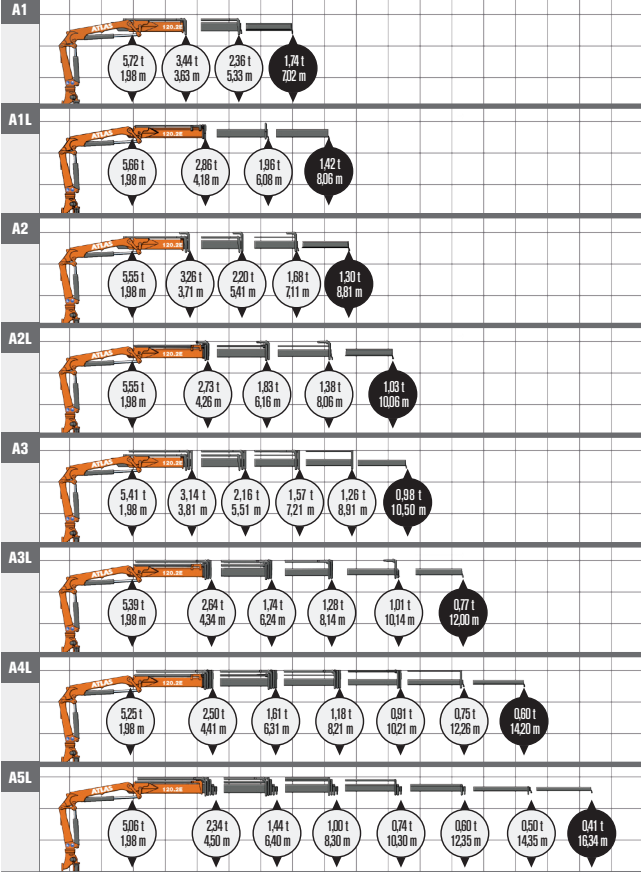
Klassifikation H1/B3



300 bar / 45 l/min



16,9 kNm / 410°



A1	1435 kg	2435 mm	2190 mm	800 mm
A2	1540 kg	2435 mm	2190 mm	800 mm
A3	1635 kg	2435 mm	2190 mm	800 mm
A1L	1455 kg	2435 mm	2190 mm	825 mm
A2L	1590 kg	2435 mm	2190 mm	825 mm
A3L	1715 kg	2435 mm	2190 mm	825 mm
A4L	1860 kg	2435 mm	2190 mm	825 mm
A5L	2015 kg	2435 mm	2190 mm	920 mm

optional

# MITTEL

MEDIUM • MOYENNE • MEDIO

## 125.2 / 125 CS

Klassifikation H1/B3

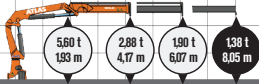


270 bar / 45 l/min

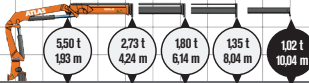


19,7 kNm / 410°

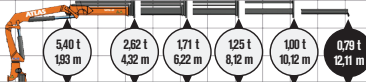
A1



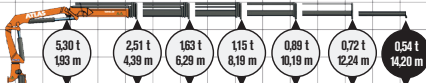
A2



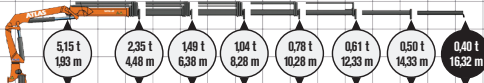
A3



A4



A5



● optional

A1	1620 kg	2446 mm	2220 mm	790 mm
A2	1750 kg	2446 mm	2220 mm	790 mm
A3	1870 kg	2446 mm	2220 mm	790 mm
A4	1970 kg	2446 mm	2220 mm	790 mm
A5	2080 kg	2446 mm	2220 mm	935 mm

# ATLAS

# 125.2 V / 125.2 VCS

Klassifikation H1/B3

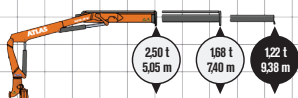


270 bar / 45 l/min

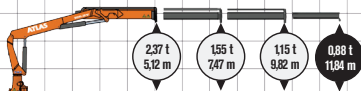


19,7 kNm / 410°





A11



A12



 optional

				
A11	1620 kg	2446 mm	2350 mm	700 mm
A12	1775 kg	2446 mm	2350 mm	700 mm

# MITTEL

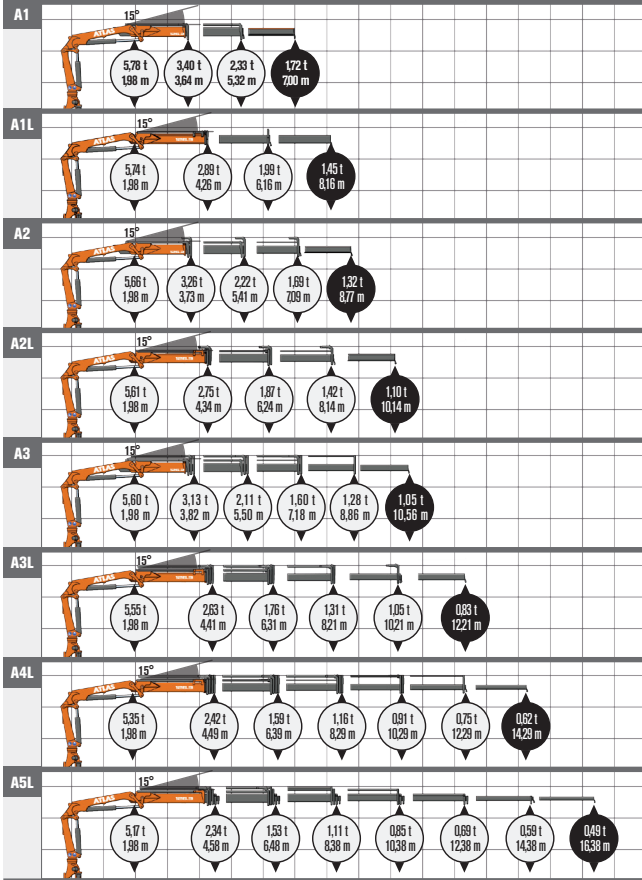
MEDIUM • MOYENNE • MEDIO





## 126.3 E / LM+

Klassifikation HC1/HD4

 320 bar / 45 l/min

 18,1 kNm / 410°



				
A1	1330 kg	2394 mm	2282 mm	890 mm
A2	1445 kg	2394 mm	2282 mm	890 mm
A3	1535 kg	2394 mm	2282 mm	890 mm
A1L	1450 kg	2394 mm	2282 mm	890 mm
A2L	1570 kg	2394 mm	2282 mm	890 mm
A3L	1690 kg	2394 mm	2282 mm	890 mm
A4L	1790 kg	2394 mm	2282 mm	890 mm
A5L	1875 kg	2394 mm	2282 mm	990 mm

 optional

# ATLAS

# 126.3 SL

Klassifikation HC1/HD4

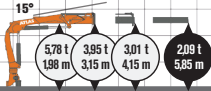


320bar / 45 l/min

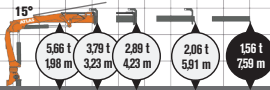


18,1 kNm / 410°

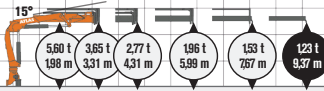
A1SL



A2SL



A3SL



● optional

A1SL	1280 kg	2394 mm	2300 mm	890 mm
A2SL	1375 kg	2394 mm	2300 mm	890 mm
A3SL	1465 kg	2394 mm	2300 mm	890 mm

# MITTEL

MEDIUM • MOYENNE • MEDIO

## 129.3 V

Klassifikation HC1/HD4

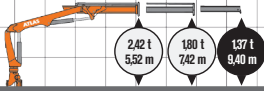


290bar / 45 l/min

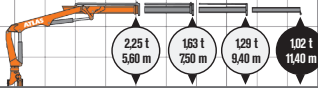


18,1 kNm / 410°

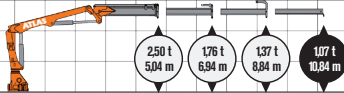
A11



A12



A12K



● optional

A11	1505 kg	2419 mm	2300 mm	731 mm
A12	1600 kg	2419 mm	2300 mm	731 mm
A12K	1575 kg	2419 mm	2300 mm	731 mm

# ATLAS



# 135.2 LM+ / 135.2 E

Klassifikation H1/B3

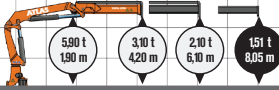


290 bar / 45 l/min

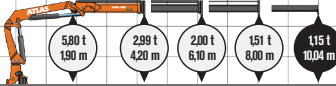


19,7 kNm / 410°

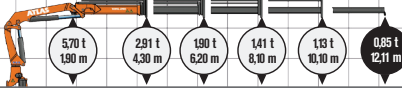
A1



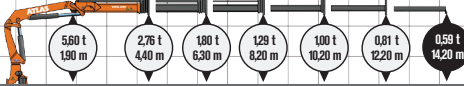
A2



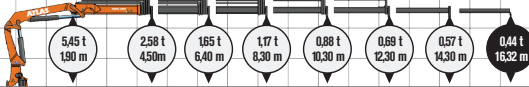
A3







A4



A5



 optional

				
A1	1635 kg	2446 mm	2220 mm	790 mm
A2	1765 kg	2446 mm	2220 mm	790 mm
A3	1885 kg	2446 mm	2220 mm	790 mm
A4	1985 kg	2446 mm	2220 mm	790 mm
A5	2095 kg	2446 mm	2220 mm	935 mm

# MITTEL

MEDIUM • MOYENNE • MEDIO

## 135.2 VLM+ / 135.2 VE

Klassifikation H1/B3

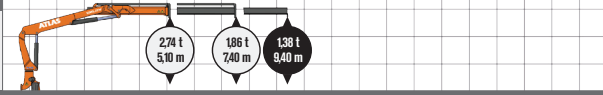


290 bar / 45 l/min

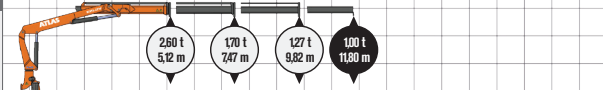


19,7 kNm / 410°

A11



A12



● optional

A11



1635 kg



2446 mm



2220 mm



700 mm

A12

1790 kg

2446 mm

2220 mm

700 mm

# ATLAS

# 145.2 / 145 CS

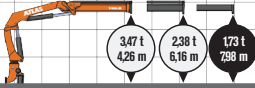
Klassifikation H1/B3



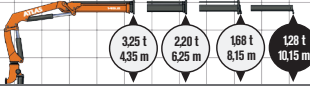
270 bar / 45 l/min



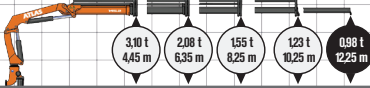
A1



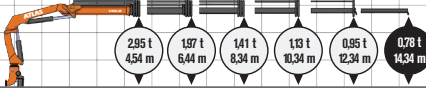
A2



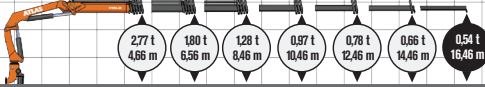
A3



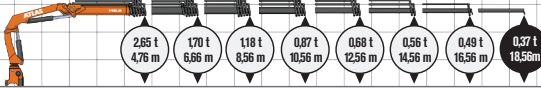
A4



A5L



A6L



● optional

A1	1800 kg	2500 mm	2280 mm	890 mm
A2	1925 kg	2500 mm	2280 mm	890 mm
A3	2060 kg	2500 mm	2280 mm	890 mm
A4	2180 kg	2500 mm	2280 mm	890 mm
A5L	2380 kg	2500 mm	2330 mm	1060 mm
A6L	2480 kg	2500 mm	2330 mm	1060 mm

# MITTEL

MEDIUM • MOYENNE • MEDIO

## 145.2 SL

Klassifikation H1/B3

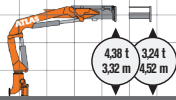


270 bar / 45 l/min

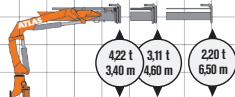


20,2 kNm / 410°

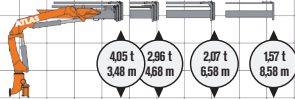
A1SL



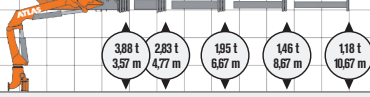
A2SL



A3SL



A4SL



● optional

A1SL	1563 kg	2500 mm	2280 mm	890 mm
A2SL	1712 kg	2500 mm	2280 mm	890 mm
A3SL	1845 kg	2500 mm	2280 mm	890 mm
A4SL	1961 kg	2500 mm	2280 mm	890 mm

# ATLAS

# 145.2 V / 145 VCS

Klassifikation H1/B3



260 bar / 45 l/min

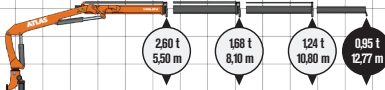


20,2 kNm / 410°

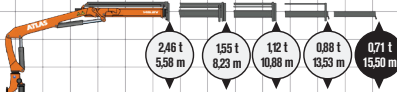
A11



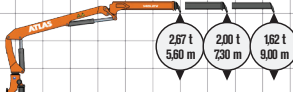
A12



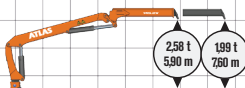
A13



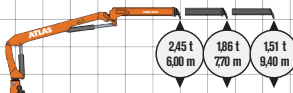
A16



A18



A19



● optional

A11	1950 kg	2500 mm	2410 mm	890 mm
A12	2105 kg	2500 mm	2410 mm	890 mm
A13	2290 kg	2500 mm	2510 mm	890 mm
A16	1955 kg	2500 mm	2495 mm	890 mm
A18	1805 kg	2500 mm	2495 mm	890 mm
A19	1915 kg	2500 mm	2495 mm	890 mm

# MITTEL

MEDIUM • MOYENNE • MEDIO

## 152.3 / 152 CS

Klassifikation HC1/HD4

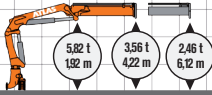


280 bar / 45 l/min

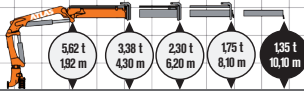


20,2 kNm / 410°

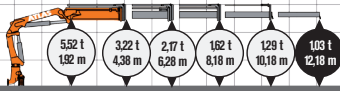
A1



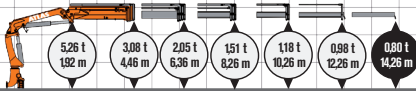
A2



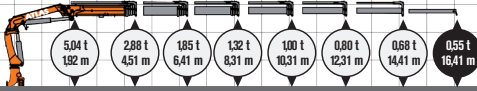
A3



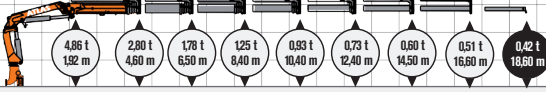
A4



A5



A6



● optional

A1	1765 kg	2440 mm	2305 mm	990 mm
A2	1925 kg	2440 mm	2305 mm	990 mm
A3	2085 kg	2440 mm	2305 mm	990 mm
A4	2185 kg	2440 mm	2305 mm	990 mm
A5	2465 kg	2510 mm	2310 mm	1115 mm
A6	2615 kg	2510 mm	2310 mm	1115 mm

# ATLAS

# 165.2 LM+ / 165.2 E

Klassifikation H1/B3

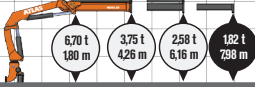


290 bar / 45 l/min

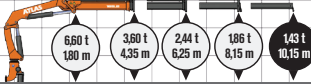


20,2 kNm / 410°

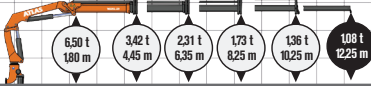
A1



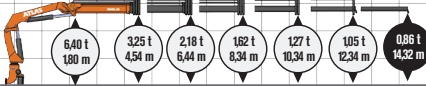
A2



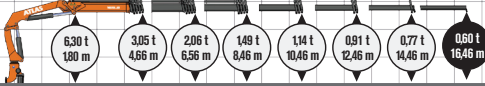
A3



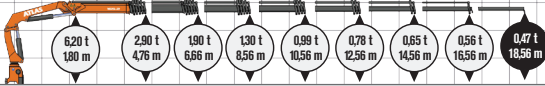
A4



A5L



A6L



● optional

A1	1815 kg	2500 mm	2280 mm	890 mm
A2	1940 kg	2500 mm	2280 mm	890 mm
A3	2075 kg	2500 mm	2280 mm	890 mm
A4	2195 kg	2500 mm	2280 mm	890 mm
A5L	2395 kg	2500 mm	2330 mm	1060 mm
A6L	2495 kg	2500 mm	2330 mm	1060 mm

# MITTEL

MEDIUM • MOYENNE • MEDIO

## 165.2 LM+ SL / 165.2E SL

Klassifikation H1/B3

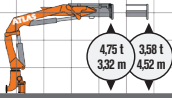


300 bar / 45 l/min

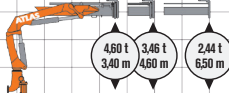


20,2 kNm / 410°

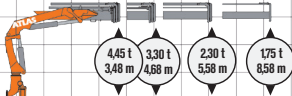
A1SL



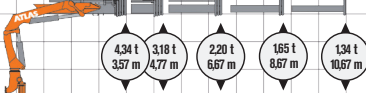
A2SL



A3SL



A4SL



● optional

A1SL	1563 kg	2420 mm	2280 mm	1150 mm
A2SL	1875 kg	2420 mm	2280 mm	1210 mm
A3SL	1823 kg	2420 mm	2280 mm	1210 mm
A4SL	2130 kg	2420 mm	2280 mm	1210 mm

# ATLAS



# 165.2 VLM+ / 165.2 VE

Klassifikation H1/B3



290 bar / 45 l/min

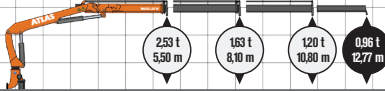


20,2 kNm / 410°

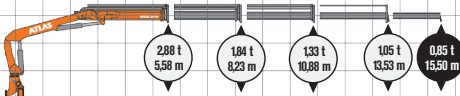
A11



A12



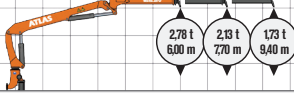
A13



A18



A19



● optional

A11	1965 kg	2500 mm	2410 mm	890 mm
A12	2120 kg	2500 mm	2410 mm	890 mm
A13	2305 kg	2500 mm	2510 mm	890 mm
A18	1820 kg	2500 mm	2495 mm	890 mm
A19	1930 kg	2500 mm	2495 mm	890 mm

# MITTEL

MEDIUM • MOYENNE • MEDIO

## 170.2 V / 170 VCS

Klassifikation H1/B3

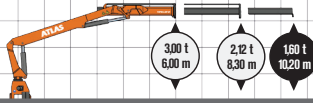


270 bar / 45 l/min

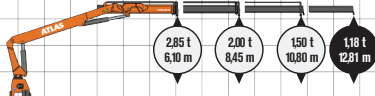


25,6 kNm / 410°

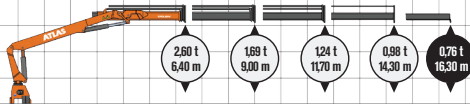
A11



A12



A13L



● optional

A11	2440 kg	2480 mm	2330 mm	817 mm
A12	2610 kg	2480 mm	2330 mm	817 mm
A13L	2760 kg	2480 mm	2330 mm	817 mm

# ATLAS

# 172.3 LM+ / 172.3 E

Klassifikation HC1/HD4

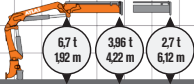


310 bar / 45 l/min

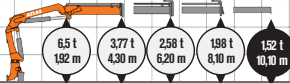


20,2 kNm / 410°

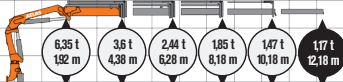
A1



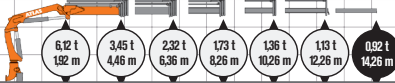
A2



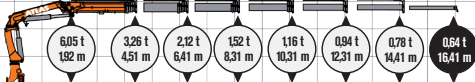
A3



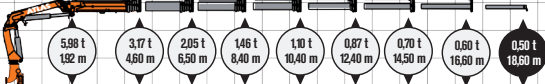
A4



A5



A6



● optional

A1	1780 kg	2440 mm	2305 mm	990 mm
A2	1940 kg	2440 mm	2305 mm	990 mm
A3	2100 kg	2440 mm	2305 mm	990 mm
A4	2200 kg	2440 mm	2305 mm	990 mm
A5	2480 kg	2510 mm	2310 mm	1115 mm
A6	2630 kg	2510 mm	2310 mm	1115 mm

# MITTEL

MEDIUM • MOYENNE • MEDIO

## 186.3

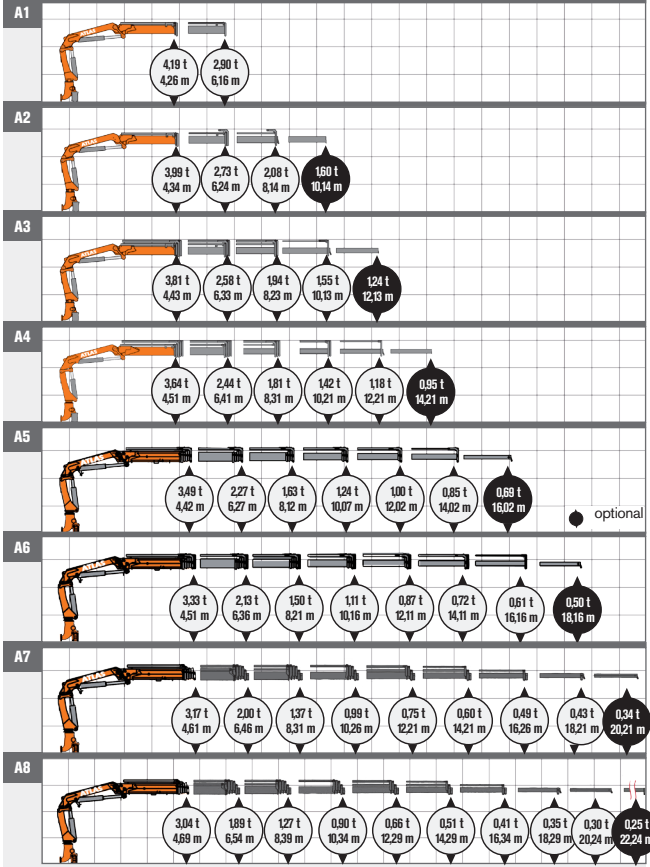
Klassifikation HC1/HD4



280 bar / 45 l/min



24,3 kNm / 410°



● optional

A1	2110 kg	2450 mm	2360 mm	1055 mm
A2	2275 kg	2450 mm	2360 mm	1055 mm
A3	2430 kg	2450 mm	2360 mm	1055 mm
A4	2560 kg	2450 mm	2360 mm	1055 mm
A5	2674 kg	2490 mm	2360 mm	1230 mm
A6	2814 kg	2490 mm	2360 mm	1230 mm
A7	2944 kg	2490 mm	2360 mm	1230 mm
A8	3094 kg	2490 mm	2360 mm	1230 mm

# ATLAS

# 186.3 V

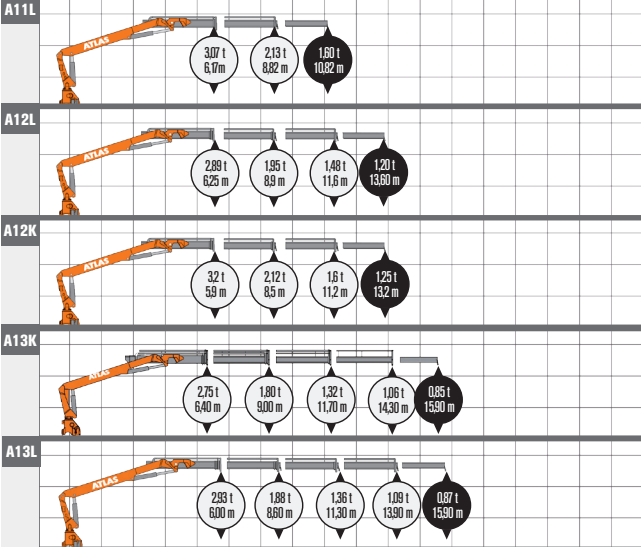
Klassifikation HC1/HD4



280 bar / 45 l/min



24,3 kNm / 410°



● optional

A11L	2195 kg	2480 mm	2325 mm	817 mm
A12L	2390 kg	2480 mm	2325 mm	817 mm
A12K	2390 kg	2480 mm	2325 mm	817 mm
A13L	2540 kg	2480 mm	2325 mm	817 mm
A13K	2540 kg	2480 mm	2325 mm	817 mm

# MITTEL

MEDIUM • MOYENNE • MEDIO

## 206.3 LM+ /206.3 E

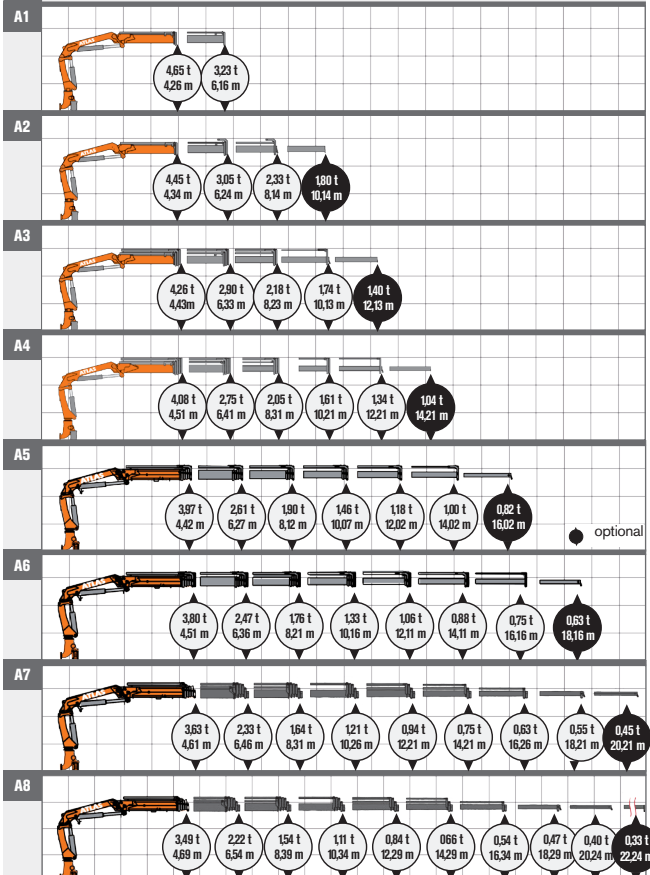
Klassifikation HC1/HD4



310 bar / 45 l/min



24,3 kNm / 410°



optional

A1	2125 kg	2450 mm	2360 mm	1055 mm
A2	2290 kg	2450 mm	2360 mm	1055 mm
A3	2445 kg	2450 mm	2360 mm	1055 mm
A4	2575 kg	2450 mm	2360 mm	1055 mm
A5	2674 kg	2490 mm	2360 mm	1230 mm
A6	2814 kg	2490 mm	2360 mm	1230 mm
A7	2944 kg	2490 mm	2360 mm	1230 mm
A8	3094 kg	2490 mm	2360 mm	1230 mm

# 206.3 V LM+ / 206.3 VE

Klassifikation HC1/HD4

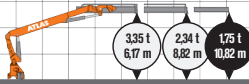


310 bar / 45 l/min

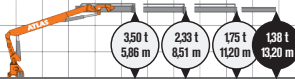


24,3 kNm / 410°

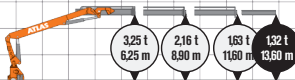
A11L



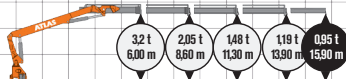
A12K



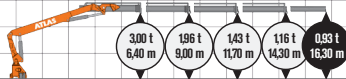
A12L







A13K



A13L



● optional

				
A11L	2210 kg	2480 mm	2325 mm	817 mm
A12K	2405 kg	2480 mm	2325 mm	817 mm
A12L	2405 kg	2480 mm	2325 mm	817 mm
A13K	2555 kg	2480 mm	2325 mm	817 mm
A13L	2555 kg	2480 mm	2325 mm	817 mm

# MITTEL

MEDIUM • MOYENNE • MEDIO

## 210.2 / 210 CS \*

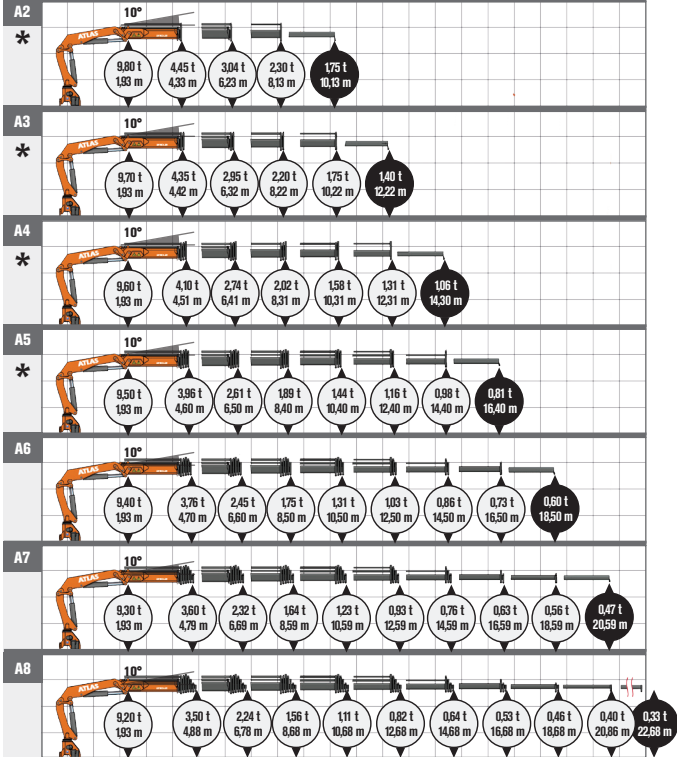
Klassifikation H1/B3



290 bar / 45 l/min



28,2 kNm / 410°



● optional

A2	2370 kg	2500 mm	2410 mm	1020 mm
A3	2520 kg	2500 mm	2410 mm	1020 mm
A4	2665 kg	2500 mm	2410 mm	1140 mm
A5	2785 kg	2500 mm	2410 mm	1140 mm
A6	2900 kg	2500 mm	2410 mm	1140 mm
A7	2995 kg	2500 mm	2410 mm	1140 mm
A8	3080 kg	2500 mm	2410 mm	1140 mm

# ATLAS



# 210.2 V / 210 VCS \*

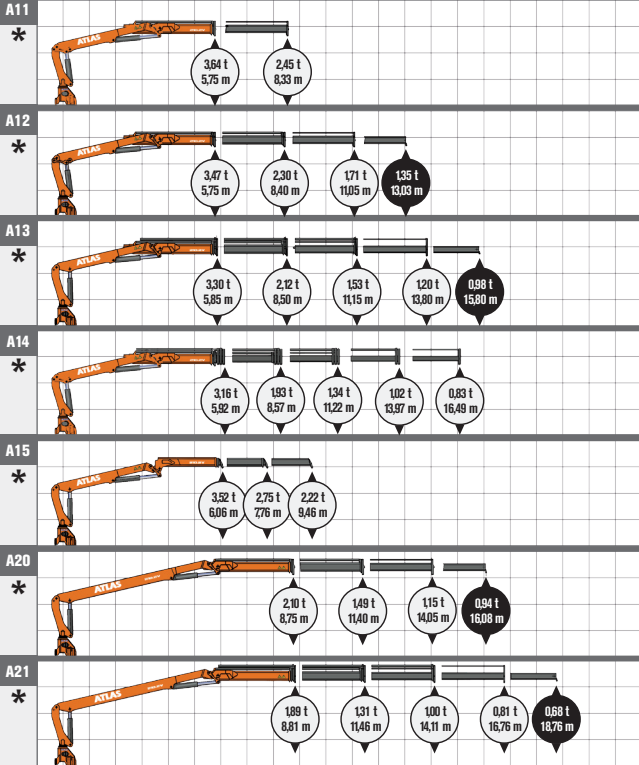
Klassifikation H1/B3



260 bar / 45 l/min



28,2 kNm / 410°



● optional

A11	2380 kg	2500 mm	2365 mm	832 mm
A12	2615 kg	2500 mm	2365 mm	832 mm
A13	2840 kg	2500 mm	2365 mm	832 mm
A14	2990 kg	2500 mm	2365 mm	832 mm
A15	2220 kg	2500 mm	2365 mm	832 mm
A20	2685 kg	2500 mm	2365 mm	832 mm
A21	2900 kg	2500 mm	2365 mm	832 mm

# MITTEL

MEDIUM • MOYENNE • MEDIO

## 240.2 LM+ / 240.2 E

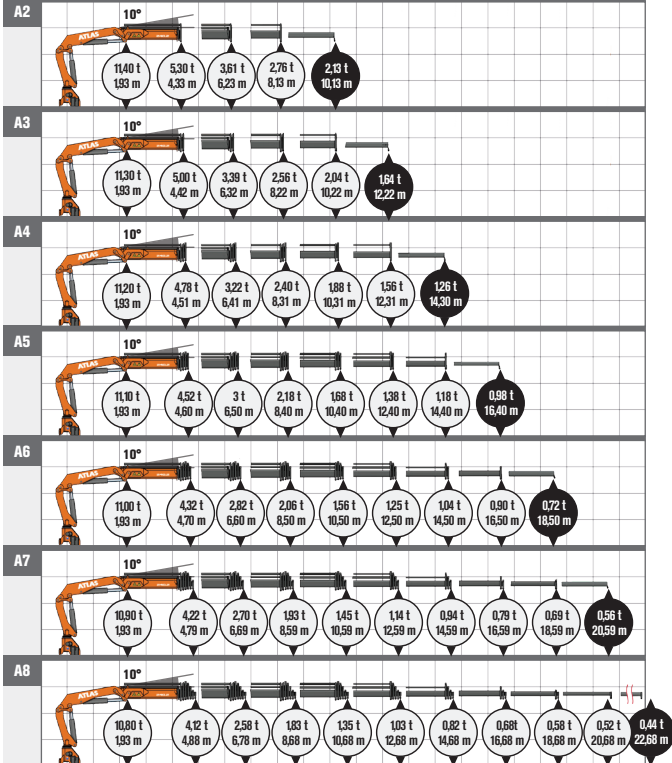
Klassifikation H1/B3



310 bar / 45 l/min



28,2 kNm / 410°



● optional

A2	2385 kg	2500 mm	2365 mm	1020 mm
A3	2535 kg	2500 mm	2365 mm	1020 mm
A4	2680 kg	2500 mm	2365 mm	1140 mm
A5	2800 kg	2500 mm	2365 mm	1140 mm
A6	2915 kg	2500 mm	2365 mm	1140 mm
A7	3010 kg	2500 mm	2365 mm	1140 mm
A8	3095 kg	2500 mm	2365 mm	1140 mm

# ATLAS

# 240.2 VLM+ / 240.2 VE

Klassifikation H1/B3



290 bar / 45 l/min

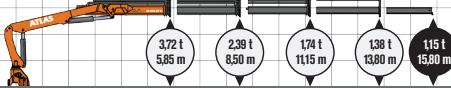


28,2 kNm / 410°

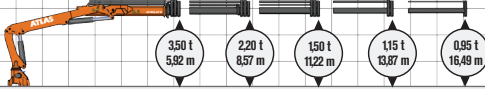
A12







A13



A14

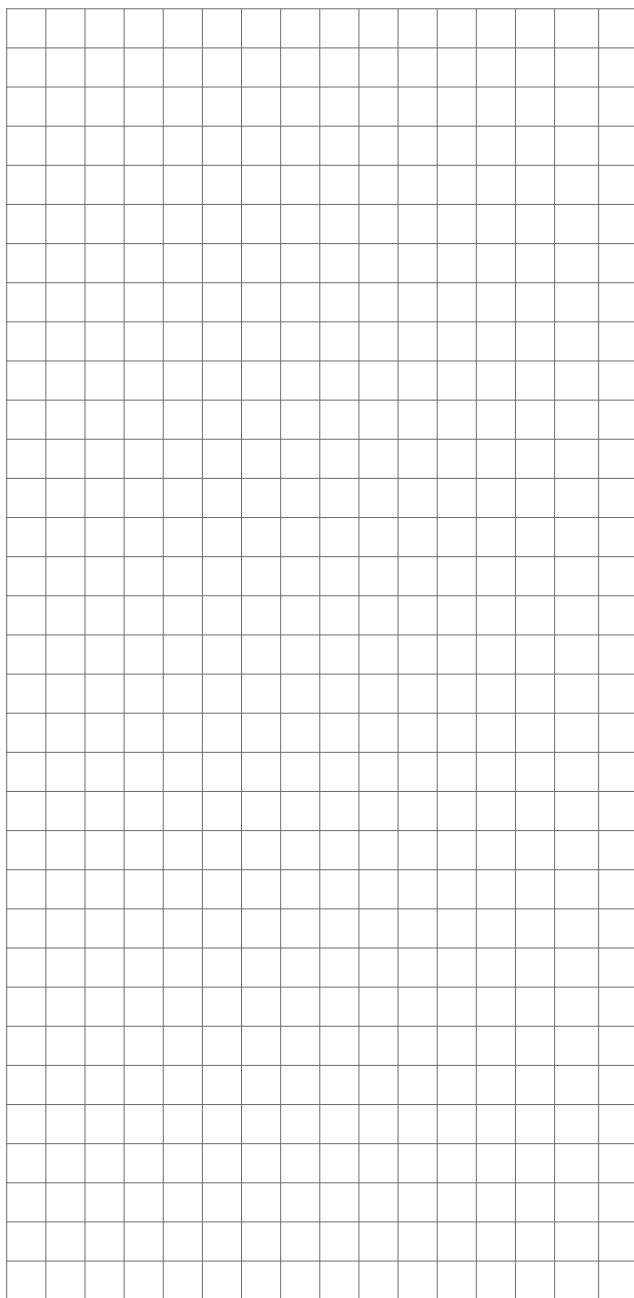


● optional

				
A12	2630 kg	2480 mm	2365 mm	817 mm
A13	2855 kg	2480 mm	2365 mm	817 mm
A14	3005 kg	2480 mm	2365 mm	817 mm

# NOTIZEN

Notes • Note • Apunte



# ATLAS

# GROSS

HEAVY • GRAND • GRAN

## 250.2 V / 250 VCS

Klassifikation H1/B3



250 bar / 50 l/min



41,6 kNm / 410°

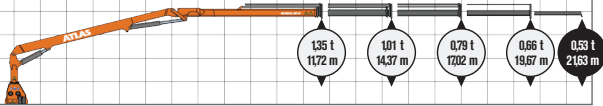
A12







A16



A21



● optional

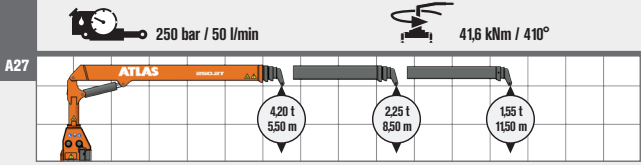
				
A12	2690 kg	2510 mm	2505 mm	869 mm
A16	3210 kg	2510 mm	2560 mm	869 mm
A21	3470 kg	2510 mm	2505 mm	869 mm





# GROSS

HEAVY • GRAND • GRAN

## 250.2 T / 250 TCS

Klassifikation H1/B3



A27	 2980 kg	 2510 mm	 2565 mm	 790 mm
-----	--	--	--	---

# ATLAS

# 280.2V

Klassifikation H1/B3

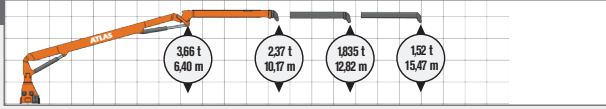


260 bar / bis 50/min



41,6 kNm / 410°

A16



A16

3350 kg



7580 mm



1550 mm



930 mm

# GROSS

HEAVY • GRAND • GRAN

300

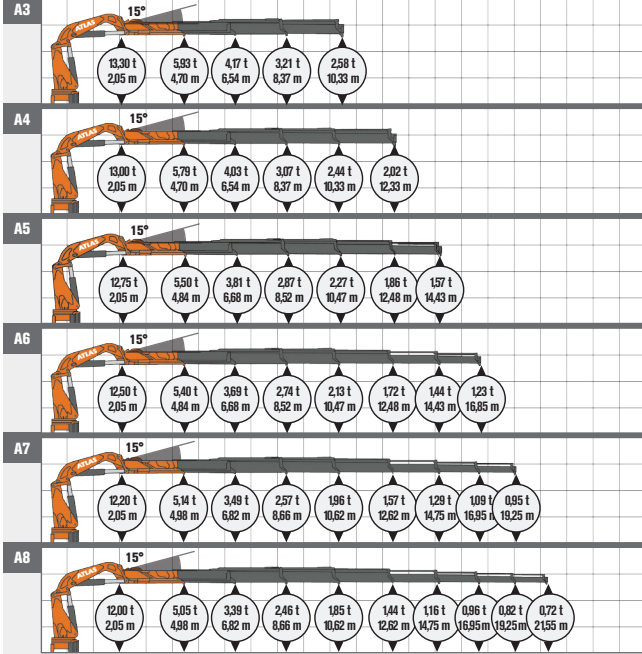
Klassifikation H1/B3



310 bar / 50 l/min



32,7 kNm / unendlich°



A3	3620 kg	2518 mm	2309 mm	1370 mm
A4	3620 kg	2518 mm	2309 mm	1370 mm
A5	3620 kg	2518 mm	2309 mm	1370 mm
A6	4100 kg	2518 mm	2309 mm	1370 mm
A7	4225 kg	2518 mm	2309 mm	1370 mm
A8	4350 kg	2518 mm	2309 mm	1370 mm

# ATLAS



# 300.2 V / 300 VCS

Klassifikation H1/B3



270 bar / 60 l/min

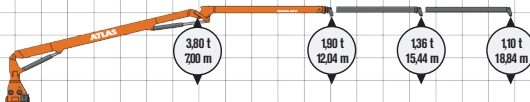


42,9 kNm / 410°

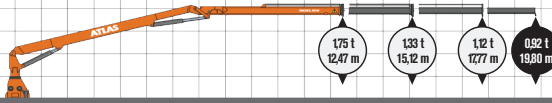
A12



A16S



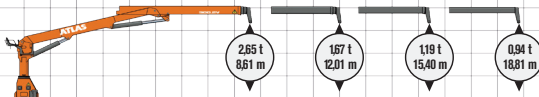
A20



A21



A24



● optional

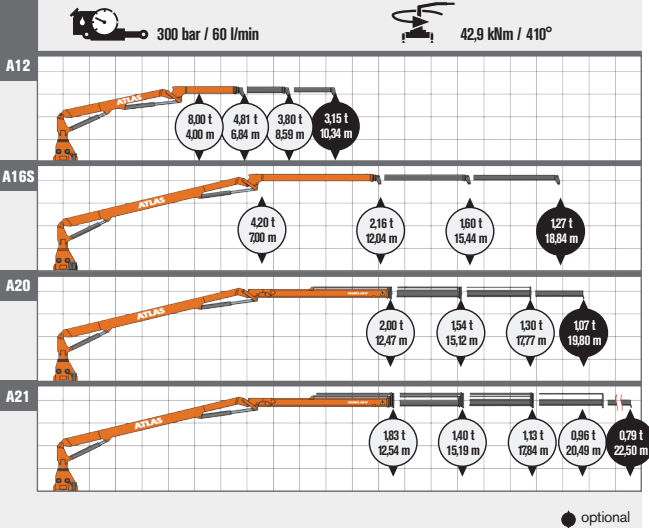
A12	2800 kg	2490 mm	2265 mm	930 mm
A16S	3120 kg	2490 mm	2265 mm	930 mm
A20	3280 kg	2490 mm	2265 mm	930 mm
A21	3500 kg	2490 mm	2265 mm	930 mm
A24	3290 kg	2490 mm	2265 mm	930 mm

# GROSS

HEAVY • GRAND • GRAN

## 330.2 VLM+

Klassifikation H1/B3



A12	2800 kg	2490 mm	2323 mm	930 mm
A16S	3120 kg	2490 mm	2323 mm	930 mm
A20	3280 kg	2490 mm	2323 mm	930 mm
A21	3500 kg	2490 mm	2459 mm	930 mm

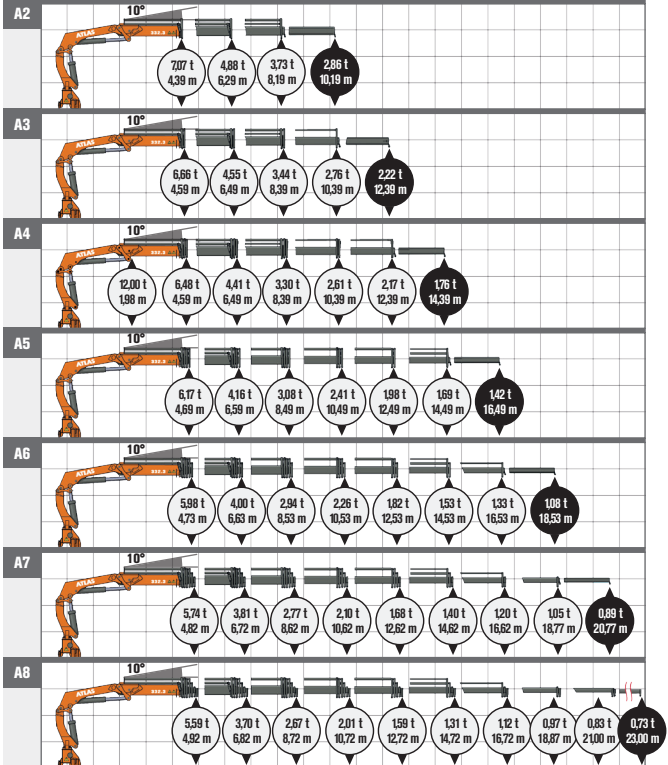
# ATLAS

# 332.3 E





Klassifikation HC1/HD4

 345 bar / 60 l/min

 35,3 kNm / 410°



 optional

				
A2	2835 kg	2500 mm	2450 mm	1065 mm
A3	3050 kg	2500 mm	2450 mm	1065 mm
A4	3250 kg	2500 mm	2450 mm	1065 mm
A5	3420 kg	2500 mm	2450 mm	1300 mm
A6	3610 kg	2500 mm	2450 mm	1300 mm
A7	3730 kg	2500 mm	2450 mm	1300 mm
A8	3840 kg	2500 mm	2450 mm	1300 mm

# GROSS

HEAVY • GRAND • GRAN

## 345.2 V / 345 VCS

Klassifikation H1/B3

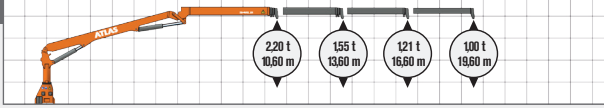


280 bar / bis 60/min



53,8 kNm / 410°

A17



A17



3990 kg



2560 mm



2810 mm



930 mm

# ATLAS

# 380.3 E

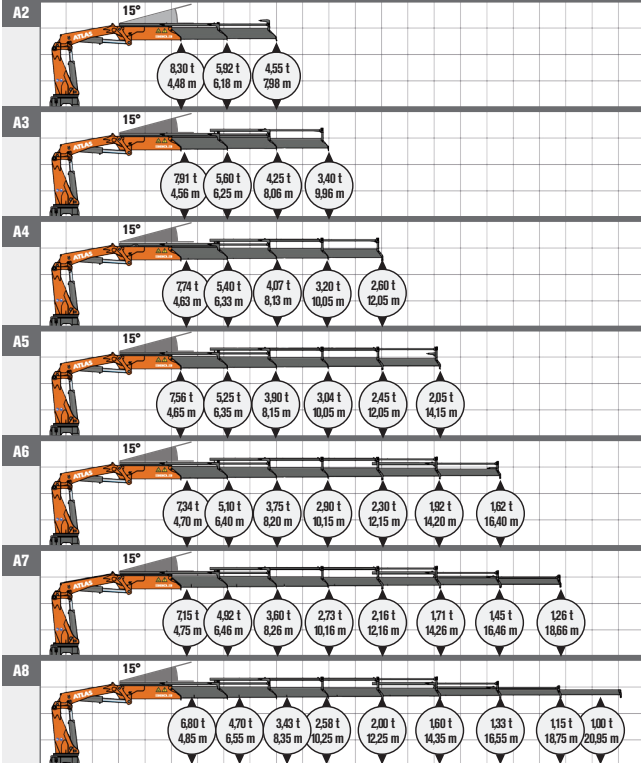
Klassifikation HC1/HD4



320 bar / bis 120 l/min



47,7 kNm / unendlich°



A2	3925 kg	2550 mm	2445 mm	1210 mm
A3	4155 kg	2550 mm	2445 mm	1210 mm
A4	4350 kg	2550 mm	2445 mm	1370 mm
A5	4540 kg	2550 mm	2445 mm	1370 mm
A6	4700 kg	2550 mm	2445 mm	1370 mm
A7	4855 kg	2550 mm	2445 mm	1370 mm
A8	5000 kg	2550 mm	2445 mm	1370 mm

# GROSS

HEAVY • GRAND • GRAN

## 440.2 V / 440 VCS

Klassifikation H1/B3

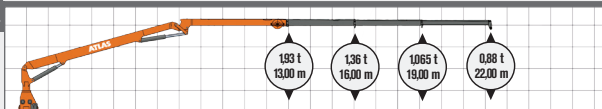


300 bar / bis 80/min



33,3 kNm / 410°

A21L



A21L



4262 kg



7580 mm



2690 mm



930 mm

# ATLAS

# 510

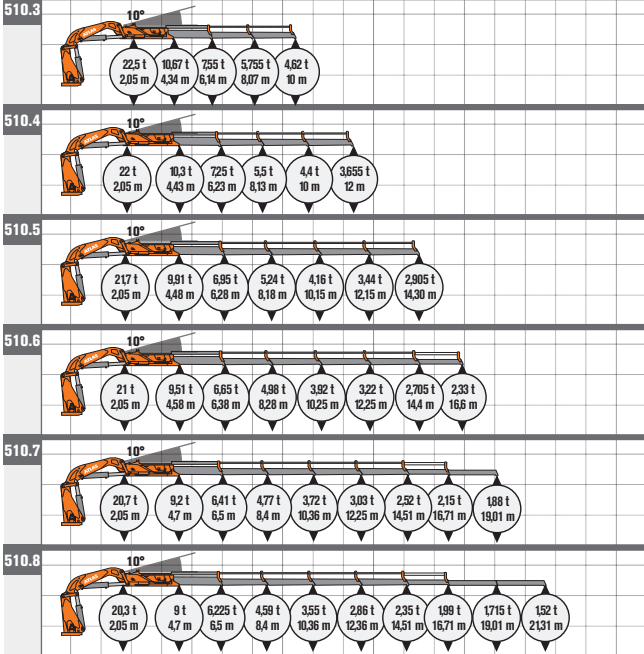
Klassifikation H1/B3



335 bar / 70 l/min



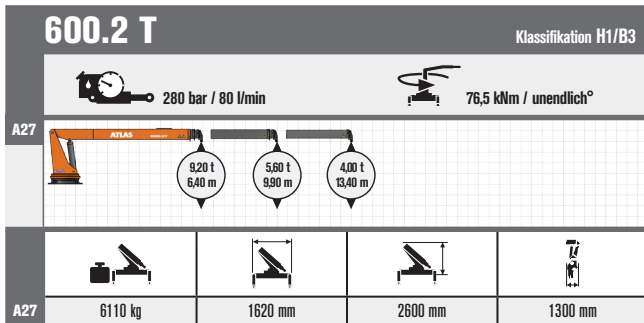
60 kNm / 600°



510.3	4960 kg	2540 mm	2358 mm	1465 mm
510.4	5140 kg	2540 mm	2358 mm	1465 mm
510.5	5310 kg	2540 mm	2358 mm	1465 mm
510.6	5480 kg	2540 mm	2358 mm	1465 mm
510.7	5540 kg	2540 mm	2358 mm	1465 mm
510.8	5670 kg	2540 mm	2358 mm	1465 mm

# GROSS

HEAVY • GRAND • GRAN



# ATLAS



# 600.2 T & JIB

Klassifikation H1/B3

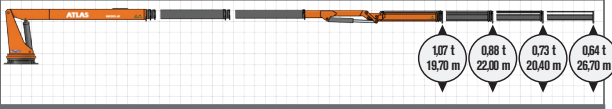


280 bar / 80l/min



76,5 kNm / unendlich°

A27S



A27S



7130 kg



1620 mm



2600 mm



1300 mm

# GROSS

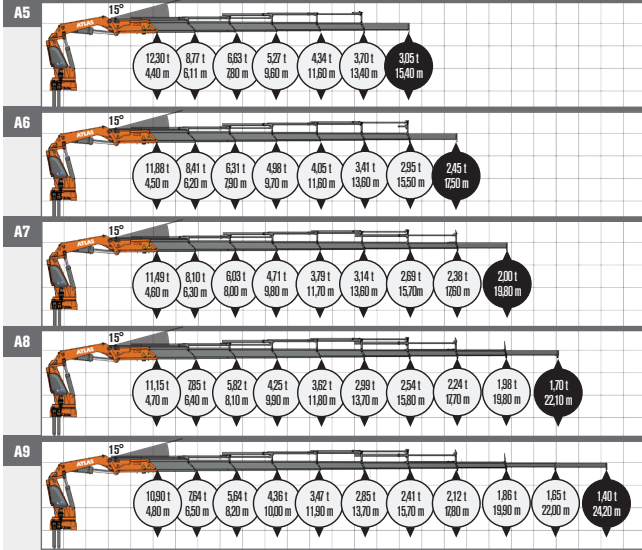
HEAVY • GRAND • GRAN

## 620.3 E





Klassifikation HC1/HD4

 350 bar / 120 l/min

 60 kNm / ∞



 optional

				
A5	6150 kg	2550 mm	2530 mm	1550 mm
A6	6420 kg	2550 mm	2530 mm	1550 mm
A7	6670 kg	2550 mm	2530 mm	1550 mm
A8	6840 kg	2550 mm	2530 mm	1550 mm
A9	6990 kg	2550 mm	2530 mm	1550 mm

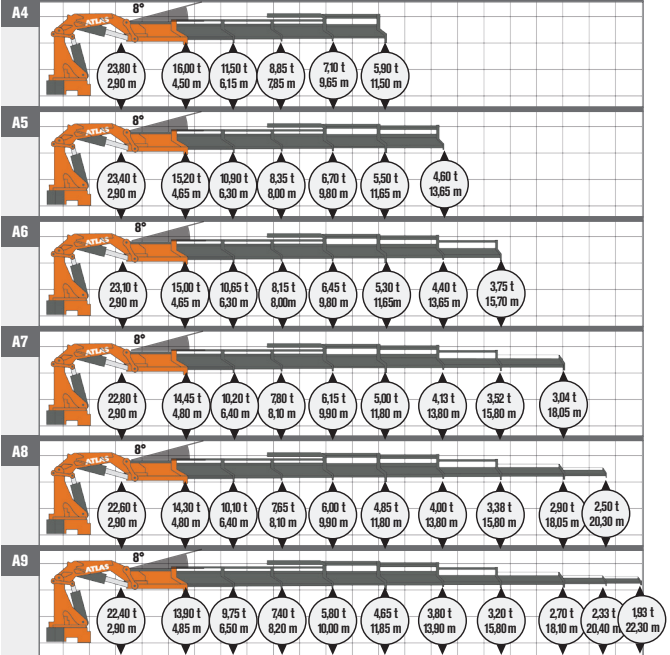
# ATLAS





# 760

Klassifikation H1/B3

 315 bar / 80 l/min

 72,0 kNm / unendlich°



				
A4	7790 kg	2550 mm	2468 mm	1750 mm
A5	8085 kg	2550 mm	2468 mm	1780 mm
A6	8347 kg	2550 mm	2468 mm	1835 mm
A7	8581 kg	2550 mm	2468 mm	1855 mm
A8	8810 kg	2550 mm	2468 mm	1855 mm
A9	8990 kg	2550 mm	2468 mm	1855 mm

# GROSS

HEAVY • GRAND • GRAN

## 870

Klassifikation H1/B3

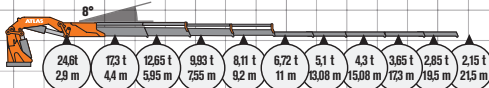


315 bar / 80 l/min

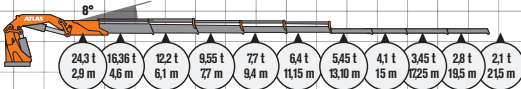


72 kNm / ∞°

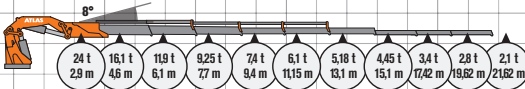
870.4



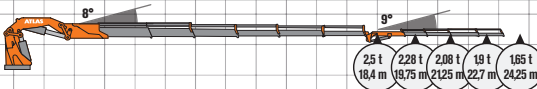
870.5



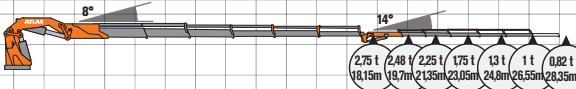
870.6



870.6J4



870.6J6



Weiter auf der nächsten Seite  
Continue on the next page  
Suite à la page suivante.  
Continúa en la página siguiente

870.4	7990 kg	2531 mm	2475 mm	2086 mm
870.5	8085 kg	2531 mm	2476 mm	2086 mm
870.6	8347 kg	2531 mm	2477 mm	2086 mm
870.6J4	9800 kg	2533 mm	2768 mm	2086 mm
870.6J6	9600 kg	2550 mm	2722 mm	2086 mm

# ATLAS

# 870

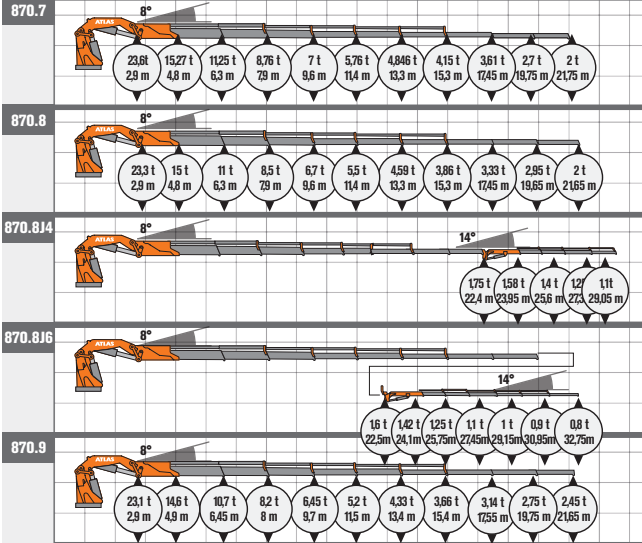
Klassifikation HC1-HD4



315/bar / 80 l/min



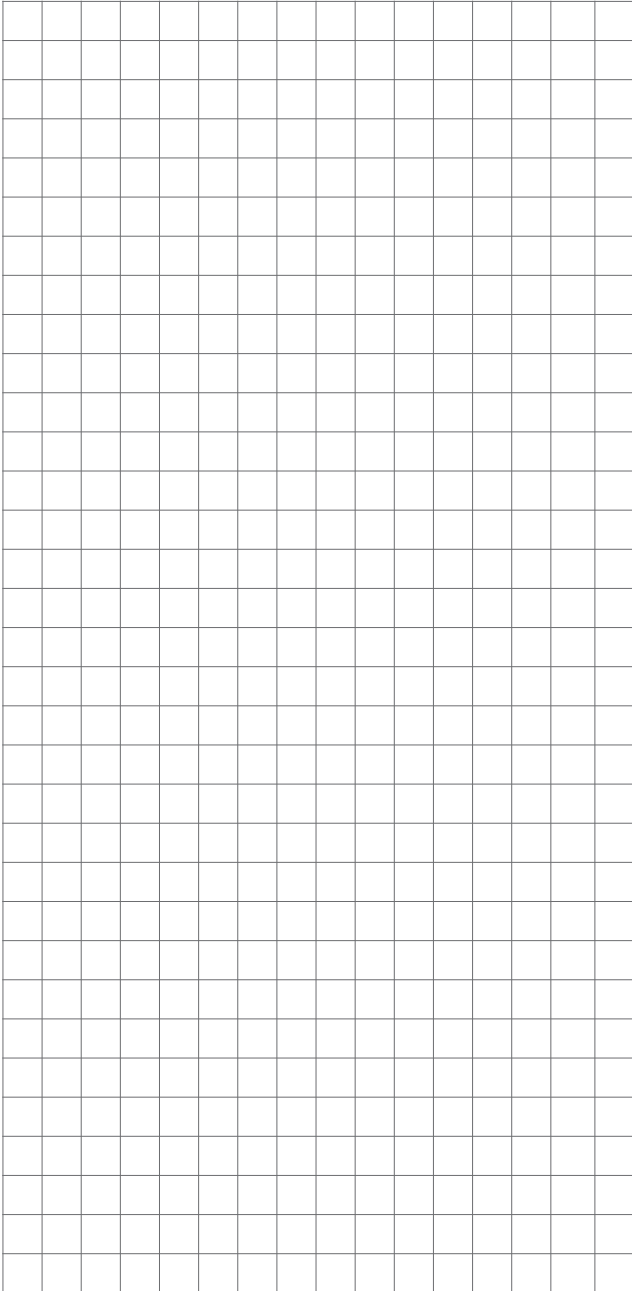
72 kNm / ∞°



870.7	8581 kg	2550 mm	2550 mm	2086 mm
870.8	8810 kg	2550 mm	2475 mm	2086 mm
870.8J4	10110 kg	2533 mm	2768 mm	2147 mm
870.8J6	10260 kg	2533 mm	2769 mm	2147 mm
870.9	8990 kg	2550 mm	2475 mm	2086 mm

# NOTIZEN

Notes • Note • Apunte



**ATLAS**

# VB-KRANE

VB-CRANES • GRUES VB • GRÚAS VB

## 145.2 VB

Klassifikation H1/B3

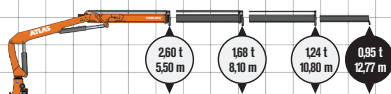


270 bar / 45 l/min



20,2 kNm / 410°

A12 VB



A19 VB



A12VB



2672 kg



2500 mm



2200 mm



890 mm

A19VB

2482 kg

2500 mm

2200 mm

890 mm

[www.atlasgmbh.com](http://www.atlasgmbh.com)

# VB-KRANE

## VB-CRANES • GRUES VB • GRÚAS VB

### 165.2 VB

Klassifikation H1/B3

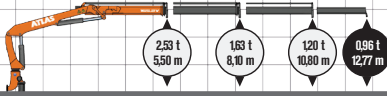


290 bar / 45 l/min

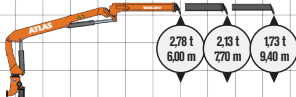






20,2 kNm / 410°

A12 VB



A19 VB



				
A12VB	2672 kg	2500 mm	2410 mm	890 mm
A19VB	2482 kg	2500 mm	2495 mm	890 mm

# ATLAS



# 186.3 VB

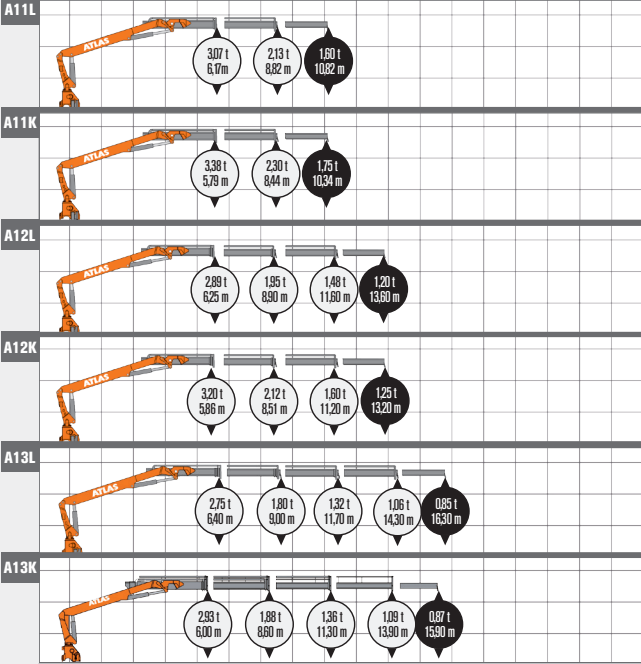
Klassifikation HC1/HD4



280 bar / 45 l/min



24,3 kNm / 410°



● optional

A11L	2945 kg	2480 mm	2325 mm	817 mm
A11K	2945 kg	2480 mm	2325 mm	817 mm
A12L	3140 kg	2480 mm	2325 mm	817 mm
A12K	3140 kg	2480 mm	2325 mm	817 mm
A13L	3290 kg	2480 mm	2325 mm	817 mm
A13K	3920 kg	2480 mm	2325 mm	817 mm

# VB-KRANE

## VB-CRANES • GRUES VB • GRÚAS VB

### 210.2 VB

Klassifikation H1/B3

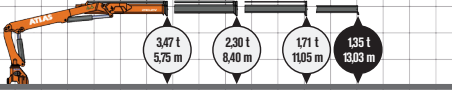


260 bar / 45 l/min

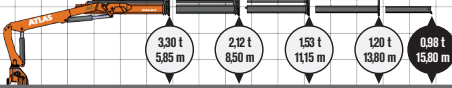


28,2 kNm / 410°

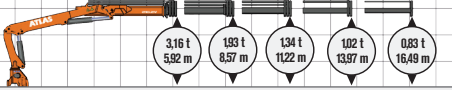
A12 VB



A13 VB



A14 VB



● optional

A12VB	3250 kg	2500 mm	2365 mm	832 mm
A13VB	3475 kg	2500 mm	2365 mm	832 mm
A14VB	3430 kg	2500 mm	2365 mm	832 mm

# ATLAS

# INFORMATIONEN

Information • L'information • Información



## **ACM - Sicherheit unter Kontrolle**

Das ACM (Atlas Crane Management) ist das zuverlässige zentrale Element für die Steuerung der Atlas-Ladekrane. Damit kann der Fahrer sich ganz auf seine Arbeit konzentrieren, während das ACM die Sicherheit des Einsatzes überwacht. Die komplette Kontrolle des Systems erfolgt in Echtzeit für einen störungsfreien Betrieb u.a. der Überlastsicherung, Not-Abschaltung und weiterer sicherheitsrelevanter Einrichtungen.

## **CS-Krane: Einfach und stark**

CS-Krane sind auf das Wesentliche reduziert: pures Heben. Die Geräte arbeiten ohne jegliche elektrische Steuerung und Bauteile — ein Vorteil bei Preis und Wartungsaufwand. Die Überlastsicherung erfolgt rein hydraulisch. Sie ist speziell für den nicht-europäischen Markt konzipiert und wird nach der Richtlinie DIN 15018 gefertigt. Dies sind die idealen Krane in Standardausführung für den täglichen Einsatz.

## **LM+: Das Plus an Leistung**

Bei Bedarf kann durch Zuschalten des LM+ das Hubmoment um ca. 15% gesteigert werden bei gleichzeitiger Verringerung der Arbeitsgeschwindigkeit. Damit kann auch eine höhere Last bei maximal möglicher Reichweite sicher befördert werden, ohne dass die Eckdaten der Sicherheit und Statik überschritten werden.

## **E-Serie: Exzellente Technologie für mehr Produktivität**

Krane der E-Serie sind mit einem umfangreichen Sicherheits- und Komfortpaket ausgestattet, damit Sie effizienter arbeiten und das Ergebnis im Vordergrund steht anstelle der Bedienung. Die E-Serie hat ihre Qualität als zuverlässige Unterstützung bereits weltweit in vielen tausend Einsatzstunden bewiesen.

### **Mehr Komfort**

Über die serienmäßige Funkfernsteuerung lassen sich die Arbeitsfunktionen bedienen und zusätzlich auch die Rüstfunktionen steuern, wie z.B. das Abstützen und seitliches hydraulisches Ausschieben.

### **Mehr Leistung**

Für 15% mehr Hubmoment ist eLM+ integriert und wird automatisch bei 80% der Leistungsgrenze zugeschaltet. Die Elektronik regelt die Arbeitsgeschwindigkeit entsprechend der Traglast.

### **Mehr Sicherheit**

Das Abschalten des Krans erfolgt im Bedarfsfall automatisch. EAW — elektronische Abstützweitenmessung für optimale Standsicherheit des LKWs.

Optional: elektronische Standsicherheitskontrolle mit Steuerung über Sensoren am Fahrzeugrahmen des LKWs.

# INFORMATIONEN

Information • L'information • Información



## **ACM – safety under control**

ACM (Atlas Crane Management) is the reliable central element of the Atlas loading cranes' control system. This allows the driver to fully concentrate on his work while ACM monitors operational safety. For trouble-free operation the system is fully monitored in real time; this includes overload protection, emergency switch-off and other safety-relevant devices.

## **CS cranes: simple and strong**

CS cranes are reduced to the essential: pure lifting. They work without electrical control system or components – an advantage where price and maintenance work are concerned. The overload protection works purely hydraulically. It is specially designed for the non-European market and manufactured in compliance with DIN 15018. These standard-type models are the ideal cranes for everyday application.

## **LM+: the performance plus**

There when you need it: actuating LM+ increases the lifting moment by about 15%, whilst decreasing the working speed at the same time. This allows handling of a greater load at maximum reach without exceeding the key data for safety and statics.

## **E-Series: excellent technology for more productivity**

E-Series cranes are equipped with a comprehensive package of comfort and safety features, enabling you to work more efficiently with a focus on results and not operation. Based on thousands of operating hours worldwide, the E-series has demonstrated its worth as a reliable support.

### **More comfort**

The standard radio remote control lets you operate work functions as well as control setup functions such as support and lateral hydraulic extension.

### **More performance**

The eLM+ is integrated for 15% more lifting moment and is automatically switched on at 80% of the performance limit. The electronic system regulates work speed in accordance with the load.

### **More safety**

The crane is switched off automatically when necessary. EAW — electronic support width measuring for optimum stability of the truck.

Optional: electronic stability monitoring controlled by sensors at the frame of the truck.

# ATLAS

# INFORMATIONEN

Information • L'information • Información



## **ACM – sécurité sous contrôle**

L'ACM (Atlas Crane Management) des grues de chargement Atlas est l'élément central fiable du système de contrôle des cranes chargeurs d'Atlas. Cela permet au conducteur de se concentrer pleinement sur son travail tandis que ACM surveille la sécurité opérationnelle. Pour un fonctionnement sans panne, le contrôle complet du système a lieu en temps réel : en font partie la protection de surcharge, arrêt d'urgence et autres dispositifs relatifs à la sécurité.

## **Grues CS: simples et fortes**

Les grues CS sont réduites au principal : levage pur. Les engins travaillent sans aucune commande ni éléments de construction électriques – un avantage sur le prix et les dépenses de maintenance. La protection de surcharge fonctionne de manière purement hydraulique. Elle est spécialement conçue pour le marché non européen et est construite selon la directive DIN 15018. Ces modèles de type standard sont les cranes idéaux pour les applications quotidiennes.

## **LM+: la performance plus**

Quand c'est nécessaire : en mettant en circuit le LM+, le couple de levage peut être augmenté d'env. 15 %, en réduisant simultanément la vitesse de travail. Ceci permet la manipulation d'une charge plus grande à portée maximale sans dépasser les données importantes garantissant la sécurité et la condition statique.

## **Série E: excellente technologie pour plus de productivité**

Les cranes de la série E sont équipés d'un ensemble complet de confort et de sécurité, qui vous permet de travailler plus efficacement en mettant l'accent sur les résultats et pas sur le fonctionnement. Basée sur des milliers d'heures de fonctionnement à l'échelle mondiale, la série E a fait ses preuves comme un support fiable.

### **Plus de confort**

Les fonctions de travail peuvent être commandées via la radiotélécommande standard et en outre les fonctions d'équipement par ex. la stabilisation et l'extension hydraulique latérale.

### **Plus de pouvoir**

Pour un couple de levage plus élevé de 15% l' eLM+ est intégré et est automatiquement mis en circuit à une limite de performance 80%. Le système électronique règle la vitesse de travail en fonction de la charge.

### **Plus de sécurité**

L'arrêt de la grue se fait si nécessaire automatiquement.

EAW - mesure électronique de la largeur de support pour une stabilité optimale du camion.

En option: surveillance électronique de la stabilité contrôlée par des capteurs au niveau du châssis du camion.

# INFORMATIONEN

Information • L'information • Información



## **ACM - Seguridad bajo control**

El sistema ACM (Atlas Crane Management) de las grúas de carga Atlas es el fiable elemento central del sistema de control de las grúas de carga Altas. Esto permite al camionero concentrarse por completo en su trabajo mientras ACM monitoriza la seguridad operativa. A fin de lograr un servicio sin fallos se realiza el control íntegro del sistema en tiempo real: éste incluye sistema de protección de sobrecarga, desconexión de emergencia y otros dispositivos de seguridad relevantes.

## **Grúas CS: Sencillas y fuertes**

Las grúas CS están reducidas a lo esencial: simplemente a alzar. Los aparatos trabajan sin ningún control ni componentes eléctricos – una ventaja en el precio y en el trabajo de mantenimiento. La protección de sobrecarga funciona puramente por hidráulica. Están concebidas especialmente para el mercado no europeo y se construyen según la directiva DIN 15018. Estos modelos de tipo estándar son las grúas ideales para el uso diario.

## **LM+: La ventaja del desempeño**

Cuando de esto se trata: Con la conexión adicional de LM+ puede aumentarse el par de elevación en aprox. un 15% con una disminución simultánea de la velocidad de trabajo. Esto permite el manejo de mayor carga con el alcance máximo sin sobrepasar los datos clave para la seguridad y la estática.

## **Serie E: Excelente tecnología para más productividad**

Las grúas de la serie E están equipadas con un paquete completo de características de comodidad y seguridad, que le permite trabajar con mayor eficacia centrándose en los resultados y no en el funcionamiento. Basadas en miles de horas de funcionamiento en todo el mundo, las series E han demostrado su mérito de soporte fiable.

### **Más confort**

Mediante el control remoto de serie no sólo pueden accionarse las funciones de trabajo sino que también pueden controlarse funciones de equipamiento como la estabilización y la extensión hidráulica lateral.

### **Más fuerza**

Para lograr un par de elevación superior en un 15% está integrado el sistema eLM+, que se conecta automáticamente a un 80% del límite de potencia. El sistema electrónico controla la velocidad de trabajo conforme la carga.

### **Más seguridad**

La desconexión de la grúa se realiza automáticamente en caso de necesidad.  
EAW: cálculo electrónico de la anchura del soporte para la estabilidad óptima del camión.  
Opcional: monitorización electrónica de la estabilidad controlada por sensores en los gálibos del camión.

# ATLAS

# ANBAUGERÄTE

Attachments • Connexions • Conexiones

## Krangabel

Pallet fork

Fourche à palette

Horquilla de paleta



## Steinstapelzange

Brick Stack Grapple

Pince à parpaing

Tenaza para pila de bloques



## Holzgreifer mit HPX drive

Logging grapple with HPX drive

Grappin à bois avec HPX drive

Pinza para madera con HPX drive



## Grabgreifer EK 607A mit stehenden Zylindern

Clamshell bucket EK 607A with vertical cylinders

Benne preneuse EK 607A avec cylindres verticaux

Cuchara de cavar EK 607A con cilindros verticales



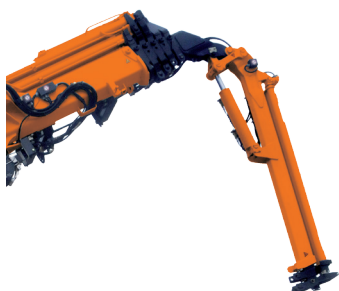
# ANBAUGERÄTE

Attachments • Connexions • Conexiones



## Hubarbeitskorb

Man basket  
Nacelle  
Cabina elevadora de trabajo



## Z-Arm

Z-boom  
Bras Z  
Brazo en Z



## Seilwide

Cable winch  
Treuil à câble  
Cabrestante

## HPX drive Schalenwechsel

HPX drive Shell Exchange  
HPX drive Changement des coquilles  
HPX drive Intercambio de mordazas



# ATLAS



# FRONTMONTAGE

Front-mounted • Montage frontal • Montaje frontal

Combination crane / truck									
	Cranes	35	37	42	44	57.3	65.2	66.3	75.2
3,5 t									
5,0 t									
6,0 t									
6,5 t									
7,5 t									
8,0 t									
10,0 t									
11,0 t									
12,0 t									
13,5 t									
15,0 t									
18,0 t									
24,0 t									
26,0 t									
32,0 t									
44,0 t									

	88.3	95.2	96.3	105.2	115.2	116.3	118.2	120.2	125.2
3,5 t									
5,0 t									
6,0 t									
6,5 t									
7,5 t									
8,0 t									
10,0 t									
11,0 t									
12,0 t									
13,5 t									
15,0 t									
18,0 t									
24,0 t									
26,0 t									
32,0 t									
44,0 t									



#### 4 Abstützungen Kran und Zusatzabstützträger

4 crane supports and auxiliary supports  
4 stabilisateurs grue et support de stabilisateurs supplémentaires  
4 Apoyos grúa y soporte de apoyo adicional



#### 2 Abstützweite klein

2 small support width  
2 petite largeur de stabilisation  
2 Anchura de apoyo pequeña




#### 2 Abstützweite größer oder max.

2 greater or max. support width  
2 grande ou largeur max. de stabilisation  
2 Anchura de apoyo mayor o máx.

# FRONTMONTAGE

Front-mounted • Montage frontal • Montaje frontal

Combination crane / truck										
	126.3	135.2	145.2	165.2	170.2	172.3	186.3	206.3	210.2	
3,5 t										
5,0 t										
6,0 t										
6,5 t										
7,5 t										
8,0 t										
10,0 t										
11,0 t										
12,0 t										
13,5 t										
15,0 t										
18,0 t										
24,0 t										
26,0 t										
32,0 t										
44,0 t										

	240.2	250.2	300.2	330.2	332.3	345.2	380.3	440.2	600.2	620.3
3,5 t										
5,0 t										
6,0 t										
6,5 t										
7,5 t										
8,0 t										
10,0 t										
11,0 t										
12,0 t										
13,5 t										
15,0 t										
18,0 t										
24,0 t										
26,0 t										
32,0 t										
44,0 t										

## HINWEIS! NOTICE! REMARQUE! NOTA!

Die genaue Überprüfung der Standsicherheit ist in jedem Fall erforderlich!

It is always required to check stability precisely!

Le contrôle précis de la stabilité est nécessaire dans tous les cas!

Se requiere en cada caso la comprobación exacta de la estabilidad!

# ATLAS

# HECKMONTAGE

Back-mounted • Montage reculez • Montaje atrás

Combination crane / truck									
	35	37	42	44	57.3	65.2	66.3	75.2	88.3
3,5 t									
5,0 t									
6,0 t									
6,5 t									
7,5 t									
8,0 t									
10,0 t									
11,0 t									
12,0 t									
13,5 t									
15,0 t									
18,0 t									
24,0 t									
26,0 t									
32,0 t									
44,0 t									

	95.2	96.3	105.2	115.2	116.3	118.2	120.2	125.2	126.3
3,5 t									
5,0 t									
6,0 t									
6,5 t									
7,5 t									
8,0 t									
10,0 t									
11,0 t									
12,0 t									
13,5 t									
15,0 t									
18,0 t									
24,0 t									
26,0 t									
32,0 t									
44,0 t									



#### 4 Abstützungen Kran und Zusatzabstützträger

4 crane supports and auxiliary supports  
4 stabilisateurs grue et support de stabilisateurs supplémentaires  
4 Apoyos grúa y soporte de apoyo adicional



#### 2 Abstützweite klein

2 small support width  
2 petite largeur de stabilisation  
2 Anchura de apoyo pequeña




#### 2 Abstützweite größer oder max.

2 greater or max. support width  
2 grande ou largeur max. de stabilisation  
2 Anchura de apoyo mayor o máx.

[www.atlasgmbh.com](http://www.atlasgmbh.com)

# HECKMONTAGE

Back-mounted • Montage reculez • Montaje atrás

Combination crane / truck										
		135.2	145.2	152.3	165.2	170.2	172.3	186.3	206.3	210.2
3,5 t										
5,0 t										
6,0 t										
6,5 t										
7,5 t										
8,0 t										
10,0 t										
11,0 t										
12,0 t		■								
13,5 t		■	■	■	■					
15,0 t		■	■	■	■	■	■			
18,0 t		■	■	■	■	■	■	■	■	■
24,0 t		■	■	■	■	■	■	■	■	■
26,0 t		■	■	■	■	■	■	■	■	■
32,0 t		■	■	■	■	■	■	■	■	■
44,0 t		■	■	■	■	■	■	■	■	■

		240.2	250.2	300.2	330.2	332.3	345.2	380.3	440.2	600.2	620.3
3,5 t											
5,0 t											
6,0 t											
6,5 t											
7,5 t											
8,0 t											
10,0 t											
11,0 t											
12,0 t											
13,5 t											
15,0 t											
18,0 t											
24,0 t		■	■								
26,0 t		■	■	■	■	■	■	■	■	■	■
32,0 t		■	■	■	■	■	■	■	■	■	■
44,0 t		■	■	■	■	■	■	■	■	■	■

## HINWEIS ! NOTICE ! REMARQUE ! NOTA !

Die genaue Überprüfung der Standsicherheit ist in jedem Fall erforderlich !

It is always required to check stability precisely !

Le contrôle précis de la stabilité est nécessaire dans tous les cas !

Se requiere en cada caso la comprobación exacta de la estabilidad !

# ATLAS

# SYMBOLERKLÄRUNG

Symbols • Symboles • Símbolos



## Betriebsdruck / Ölfördermenge

Operating pressure / oil supply amount

Pression de service / Débit d'huile

Presión de servicio / Caudal de aceite



## Schwenkmoment / Schwenkbereich

Swivel moment / swivel range

Couple de pivotement / Plage de pivotement

Par de giro / Alcance de giro



## Gewicht ohne Abstützverbreiterungen und Stützbeine

Weight without stabilizer extensions and stabilizer legs

Poids sans extensions du stabilisateur et jambes de stabilisateur

Peso sin extension de los estabilizadores lateral y sin apoyos

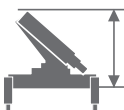


## Kranbreite

Crane width

Largeur grue

Anchura de grúa

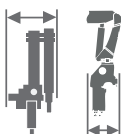


## Kranhöhe

Crane height

Hauteur grue

Altura de grúa



## Einbaubreite

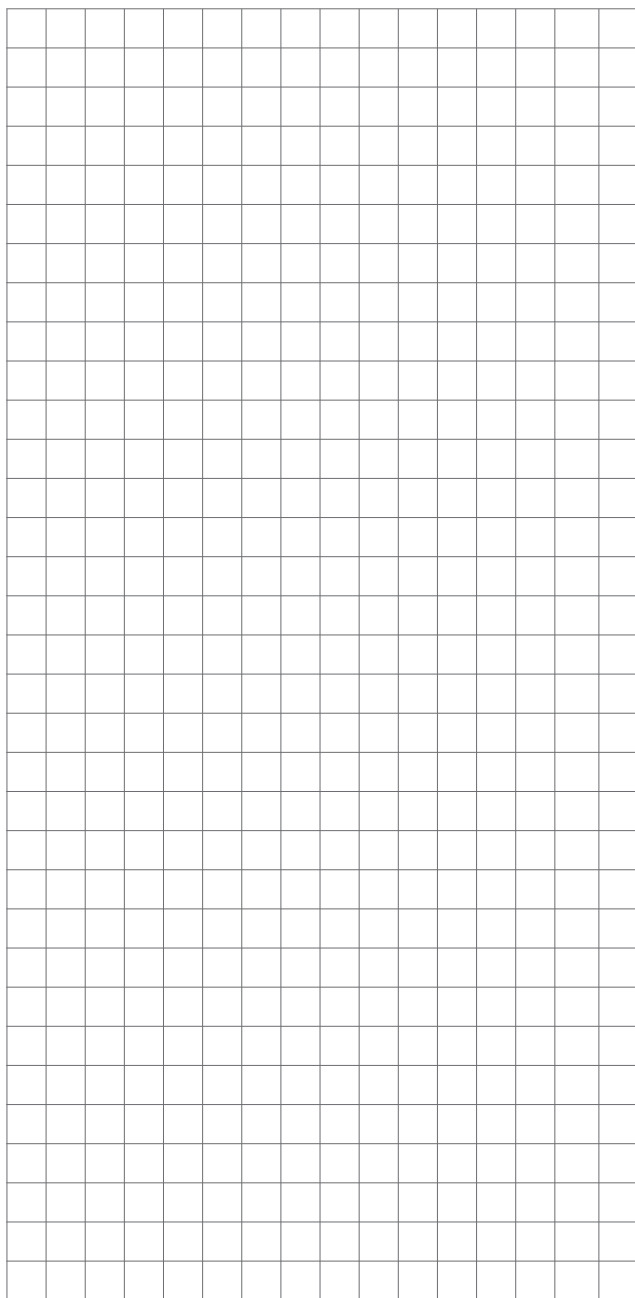
Assembly width

Largeur de montage

Anchura de montaje

# NOTIZEN

Notes • Note • Apunte



# ATLAS



[www.atlasgmbh.com](http://www.atlasgmbh.com)

Alle Rechte vorbehalten. „ATLAS“ ist eine eingetragene Marke der Atlas GmbH in den Deutschland und vielen anderen Ländern.

All rights are reserved. ATLAS is a registered trademark of Atlas GmbH in Germany and many other countries.

Tous les droits sont réservés. „ATLAS“ est une marque déposée de Atlas GmbH aux Allemagne et dans de nombreux autres pays.

Todos los derechos se reservan. „ATLAS“ es una marca comercial registrada de Atlas GmbH en Alemania y muchos otros países.

Copyright 2016 Atlas GmbH

Atlas GmbH



Brochure Reference: 6159842-02/2018